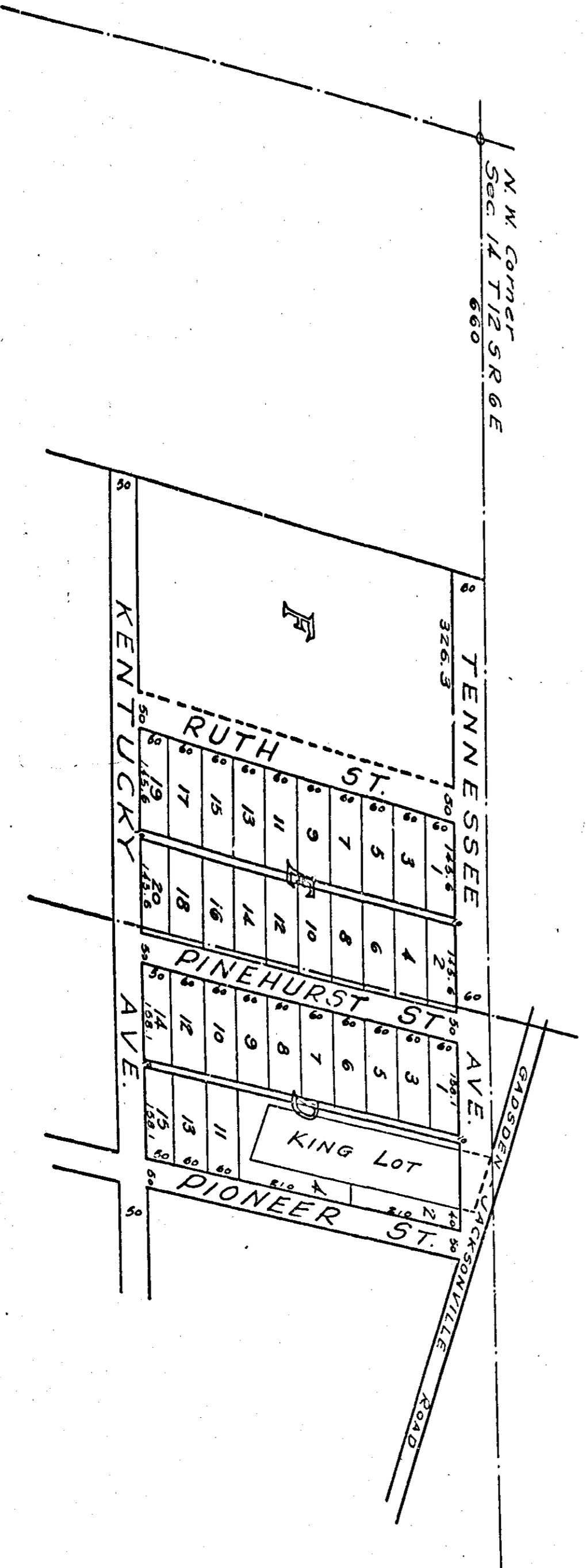


MAP SHOWING
 SUBDIVISION OF LOTS D E & F
 OF PINE HURST ADDITION
 TO EAST GADSDEN ALA

SCALE: 1"=200'



I, Ernest Smith, a Surveyor
 hereby certify that this is a
 correct plat of this property
 as subdivided by me in 1909.
 Ernest Smith
 Surveyor