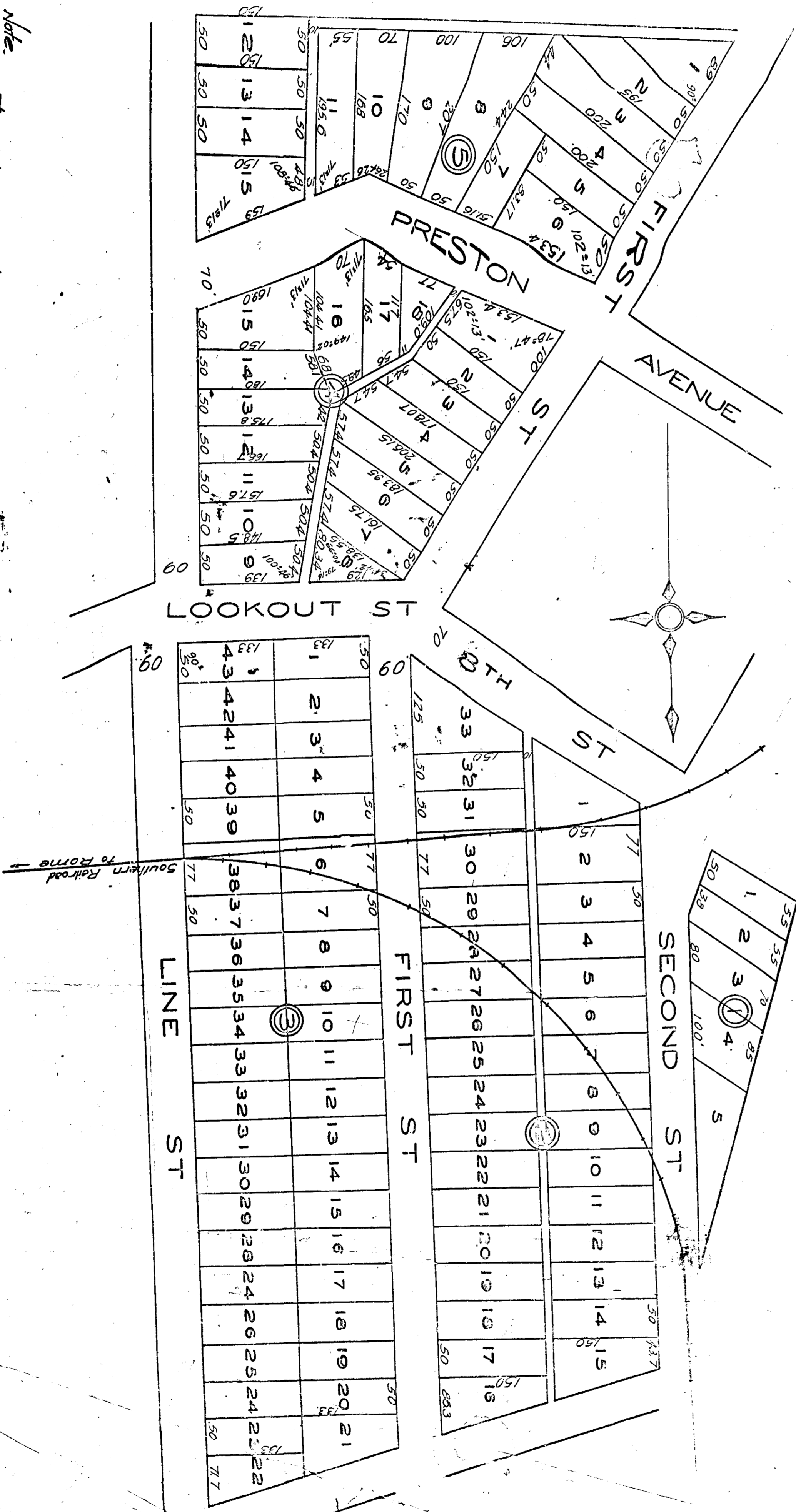


MAP OF THE
 GLENN ADDITION
 W/2-NW/4-SEC-2-T/25-R5E
 TO ATTALLA ALA



Note: The Original of this map was never recorded; the map as herein shown was worked up from a print of the original tracing, but no certificates were on the tracing at the time the prints were made; but the map, in all respects, has checked up right on the ground where the complete plat had occasion to make survey of any portion thereof.

November, 18, 1892
 E. H. Co. Civil Engineer and Surveyor, Compiler.
 Gadsden, Ala.