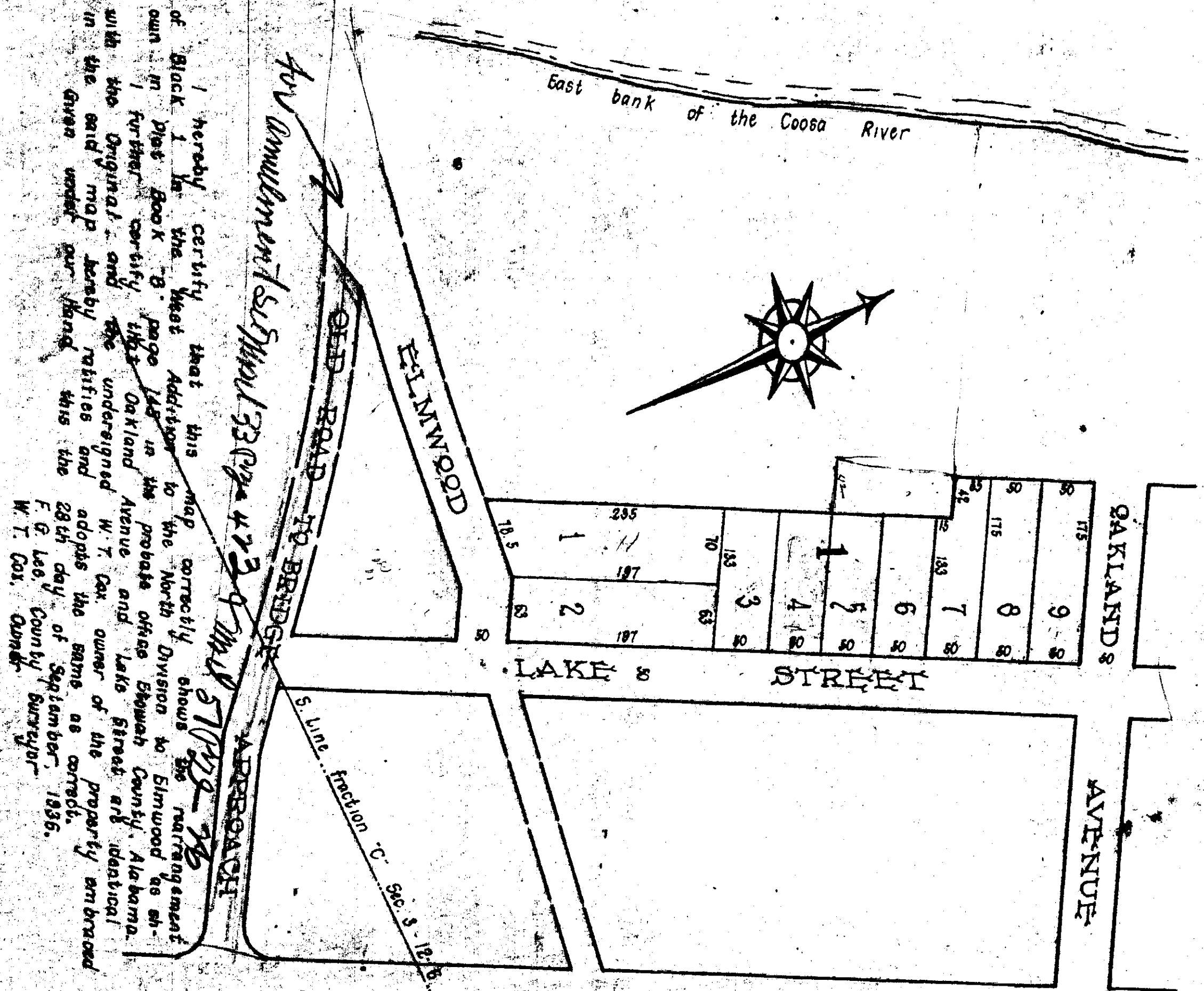


REARRANGEMENT BLK. 1
 OF WEST ADDITION TO
 N. DIVISION OF ELMWOOD
 PART OF FRACTIONS C & D, SECTION 3 TP 12 R 6
 NOTE: SEE BOOK B, PAGE 145 FOR ORIGINAL.



I hereby certify that this map correctly shows the rearrangement of Block 1 in the West Addition to the North Division to Elmwood as shown in Plat Book B, page 145 in the probate office of Elmore County, Alabama. I further certify that Oakland Avenue and Lake Street are identical with the original and the undersigned W. T. Cox, owner of the property embraced in the said map hereby ratifies and adopts the same as correct, F. G. Lee, County Surveyor, W. T. Cox, County Surveyor, 28th day of September, 1896.

The State of Alabama, Elmore County in and for said State and County, hereby certify that F. G. Lee as County Surveyor and W. T. Cox as owner of the property contained in the within map or plat and who are known to me, acknowledge before me on this day that being informed of the contents of the acknowledgment, they executed the same voluntarily on the day the same were before them under my hand and the 1st day of October, 1896.

James Silver, Notary Public

This is office for record on the 1st day of October, A. D. 1896 at 4 o'clock P. M. and duly recorded the 6th day of October, 1896.

E. L. Hurst, Judge of Probate