

ALTOONA, ALABAMA

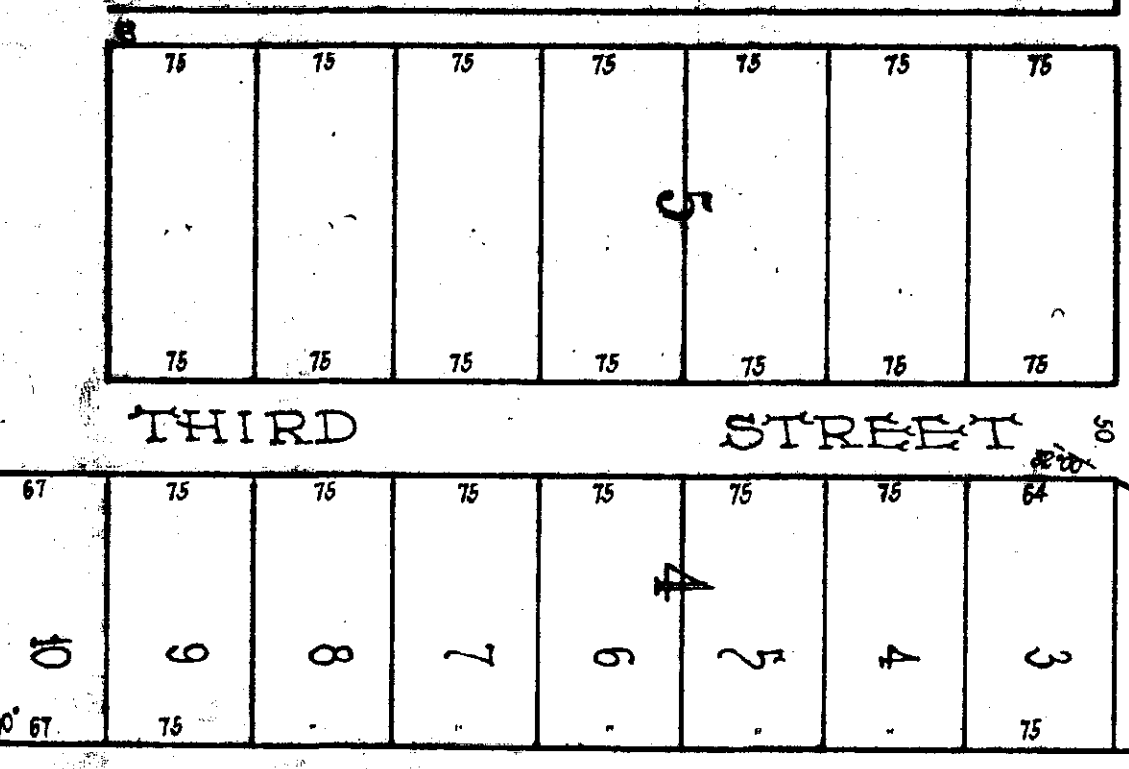
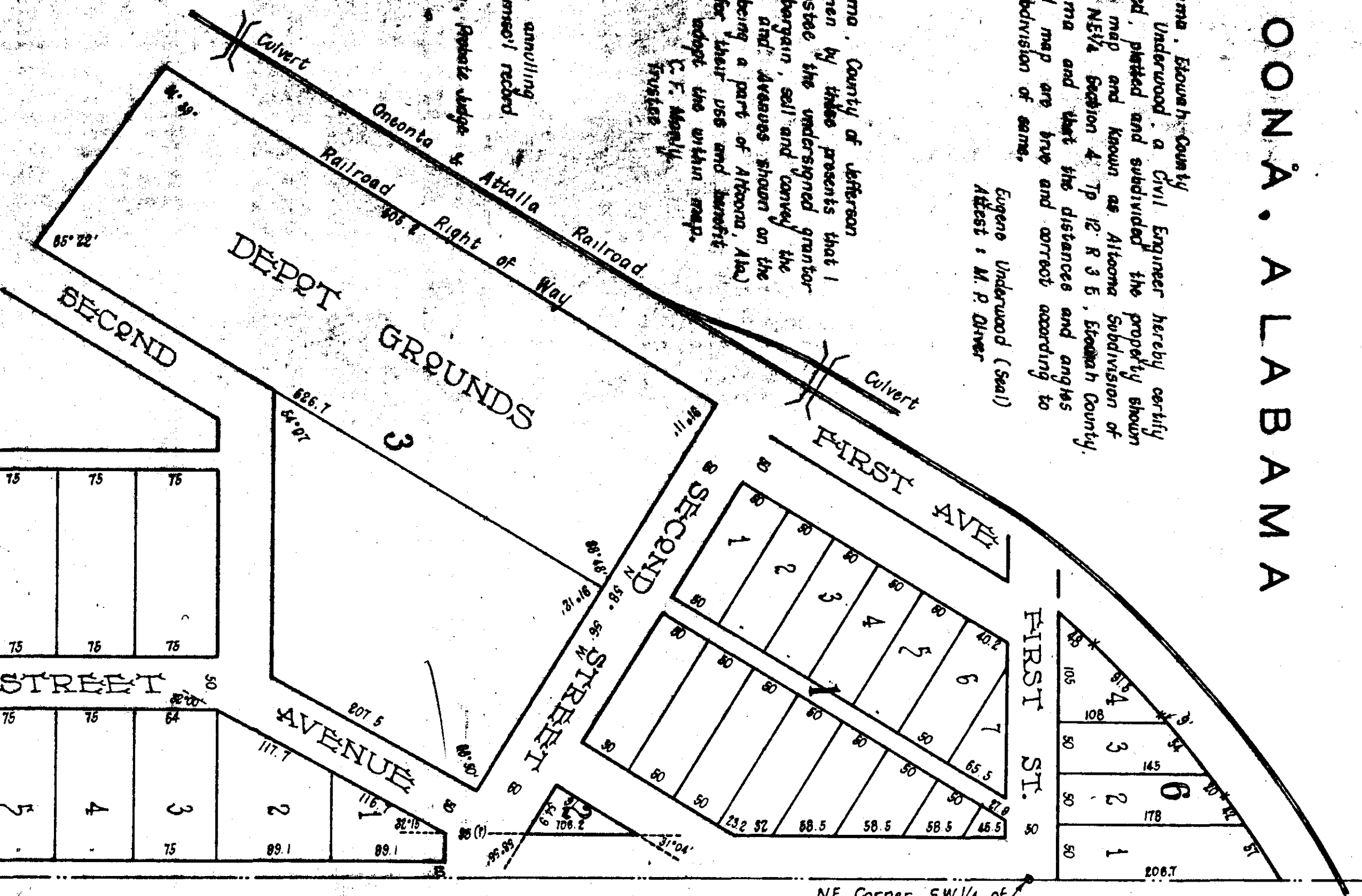
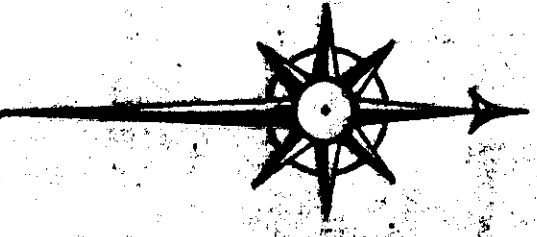
State of Alabama, Etowah County
 Eugene Underwood, a Civil Engineer hereby certify that I surveyed, plotted and subdivided the property shown on the within map and known as Altoona Subdivision of the SW 1/4 of NE 1/4 Section 4, T. 12 R. 3 E., Etowah County, State of Alabama and that the distances and angles shown on said map are true and correct according to survey and subdivision of same.

Eugene Underwood (Seal)
 Attest: M. P. Oliver

State of Alabama, County of Jefferson
 Know all men by these presents that I C. F. Manly, trustee the undersigned grant hereby grant, bargain, sell and convey the streets, Alleys and Avenues shown on the within map (being a part of Altoona, Ala.) to the public for their use and benefit and voluntarily adopt the within map.

C. F. Manly,
 Trustee

For certificate annulling this plat, see meso' record, p. 187, U. W. Ramm, Probate Judge.



SE Corner of SW 1/4 of NE 1/4 Sec. 4-12-3

NE Corner SW 1/4 of NE 1/4 Sec. 4-12-3

State of Alabama, Jefferson County
 I, Vasser L. Allen, a Notary Public in and for said State and County, hereby certify that C. F. Manly, Trustee, whose name is signed to the foregoing map or plat and who is known to me, also known to me to be such trustee, acknowledged before me on this day that being informed of the contents of the annexed plat or map with Streets, Avenues, Alleys, Lots and blocks as being marked and numbered, he voluntarily adopted the same.

Vasser L. Allen,
 Notary Public

Filed in office for record on the 17th day of April A.D. 1905 at 2 o'clock P.M. and duly recorded the 18th day of April, 1905.
 J. W. Penn,
 Judge of Probate