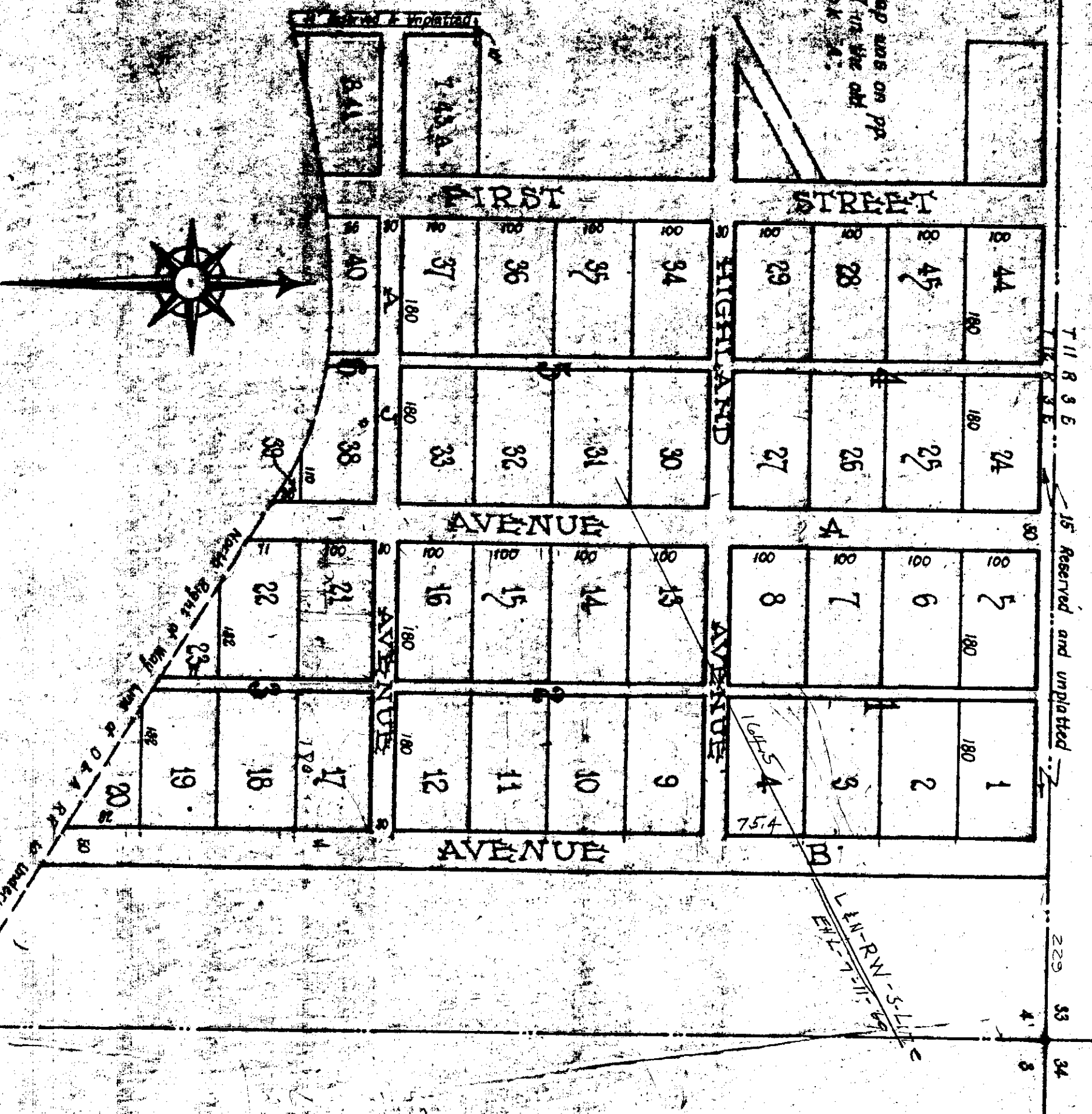


SUBDIVISION OF ALTOONA

ETOWAH COUNTY, ALA.
NE 2^d NE SEC. 4 TP 12 R 3 E

KNOWN AS ROCKERS ADDITION NUMBER 1

Notes:
This map was on pp
386 & 387 in the old
Plat Book 54.



State of Alabama, Etowah County
 This is to certify that M. P. Brittain, Surveyor have surveyed, plotted and subdivided a part of the NE 1/4 of the NE 1/4 of Section 4 in Township 12 South Range 3 East, Etowah County, Alabama as shown on this map, said survey beginning at a point on the North line of Section 4 T 12 R 3, 229 ft West of the North East Corner of said Section on the East line of Avenue B and that the distances and angles shown on this map according to the scale thereof are correct according to my survey.

Attoona, 1905.
M. P. Brittain
Surveyor

I hereby adopt this map as laid off and drawn off.
J. N. Rockles

The State of Alabama, Etowah County
 I, J. W. Penn, Judge of Probate in and for said State and County hereby certify that J. N. Rockles, whose name is signed to the foregoing plat of map and who is known to me acknowledged before me on this day that being informed of the contents of the foregoing plat or map with Streets, Avenues, Bids and Lots and Blocks, nearest and off marked and numbered voluntarily acknowledged and adopted same as of this date.

Given under my hand this 17 day of August, 1905.
J. W. Penn,
Judge of Probate

Filed in office for record on the 16 day of August A.D. 1905 at 4 o'clock
P. M. and duly recorded the 27th day of August 1905.
J. W. Penn, Judge of Probate