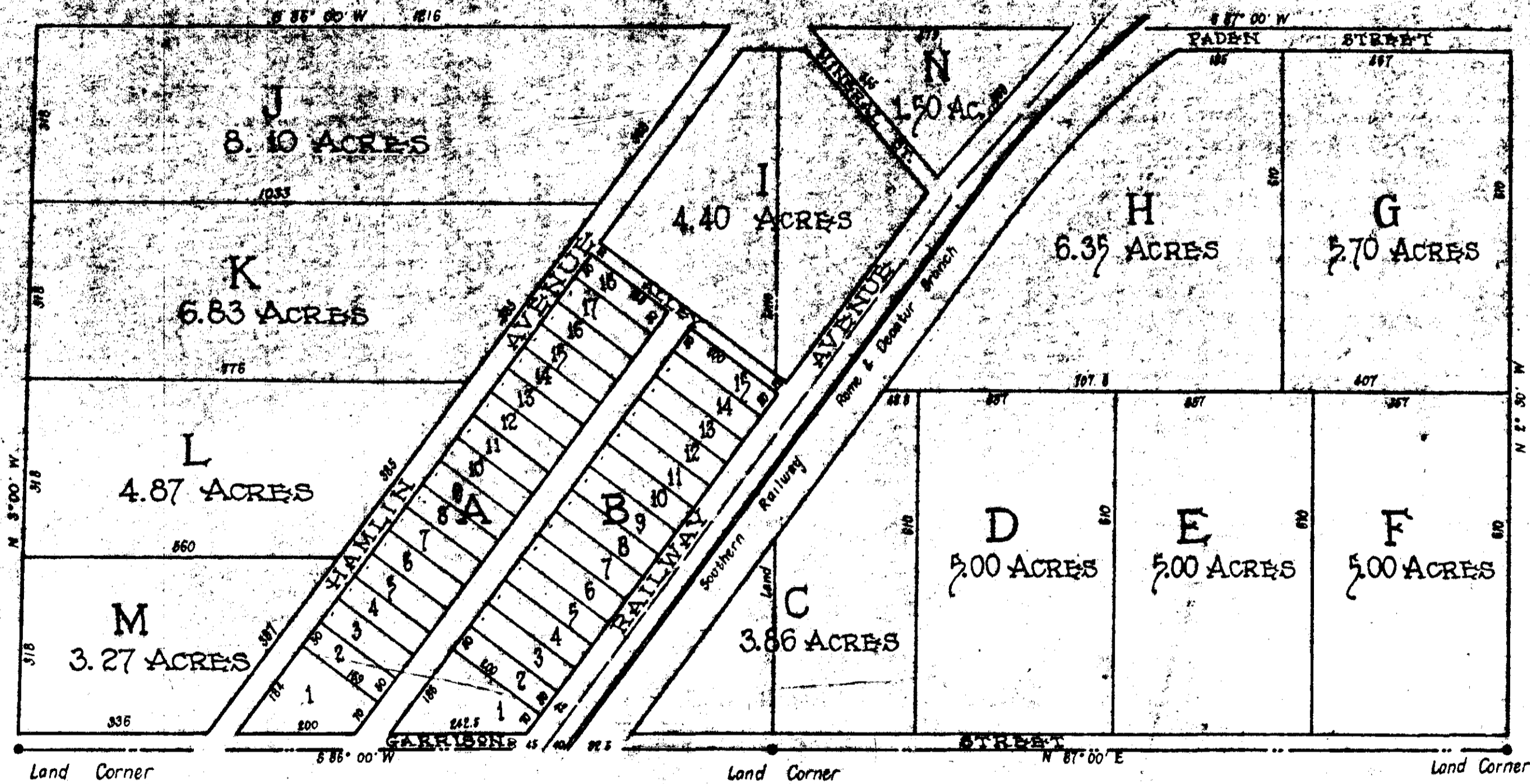


MEADOW BROOK FARM

PROPERTY BELONGING TO SILE & GODDARD
GARDNER & TOWNE Co., ALABAMA



Filed in office for record on
the 2 day of February A.D. 1905
at 10 o'clock A.M. and duly re-
corded the 5 day Feb. 1905.
J.W. Penn.
Judge of Probate
T.W. Lister, Civil Engineer