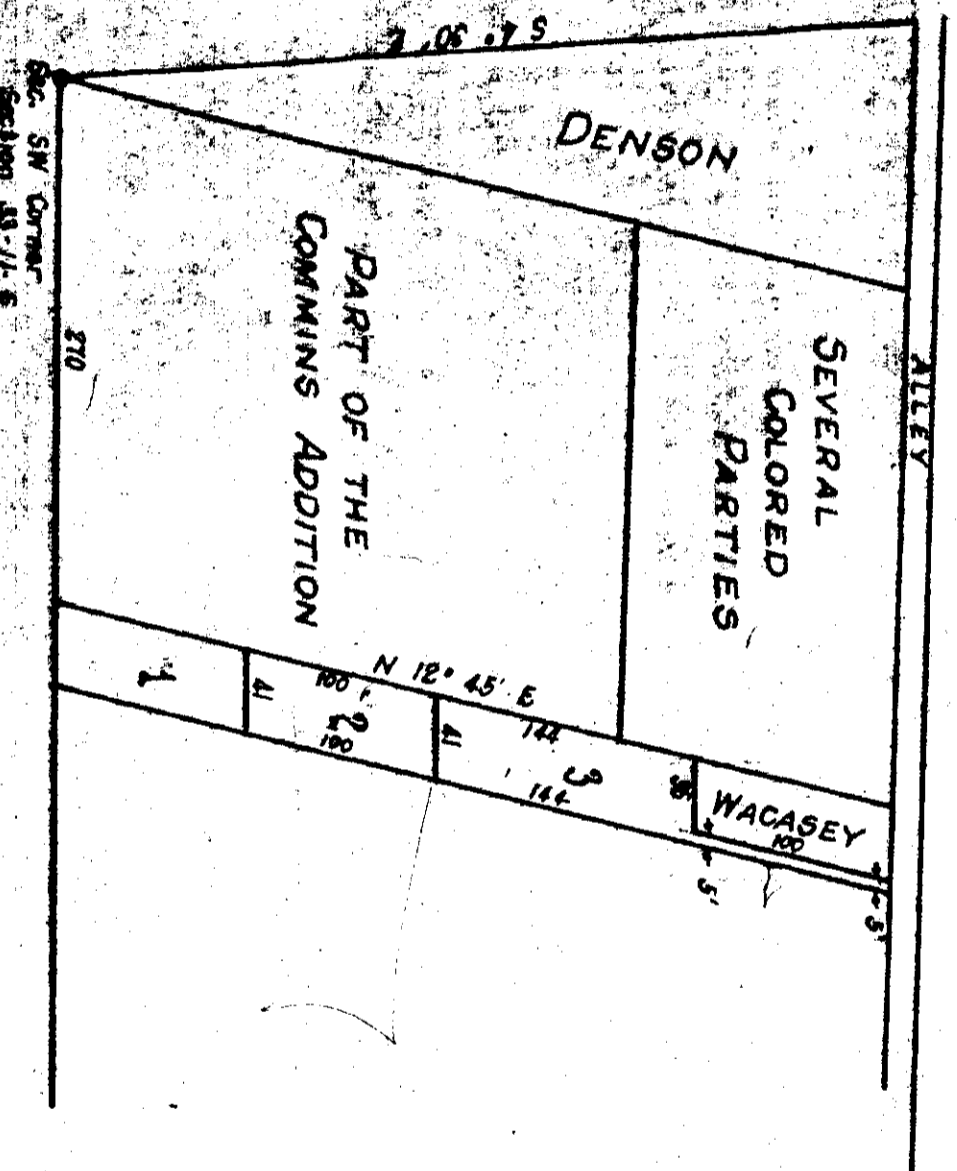
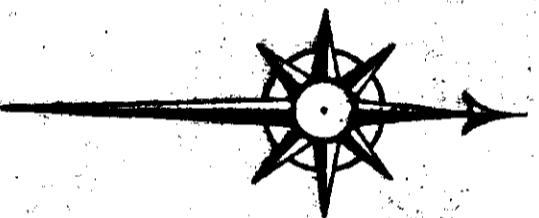


WRIGHT ADDITION TO COMMINS ADDITION

GAUSDEN, ALABAMA
T. W. LISTER, CIVIL ENGR.
NOVEMBER 15, 1904.
SCALE: 1" = 100'



370
41
311

Filed in office for record on the 9th of January, 1905
at 12 o'clock P. M. and duly recorded the 9th day of Jan.,
1905.
J. W. Penn,
Judge of Probate