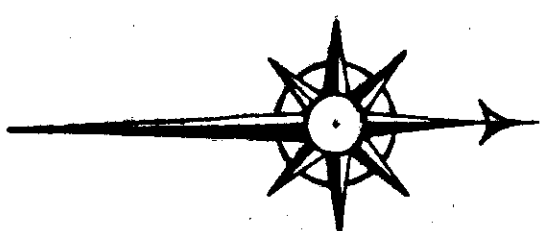
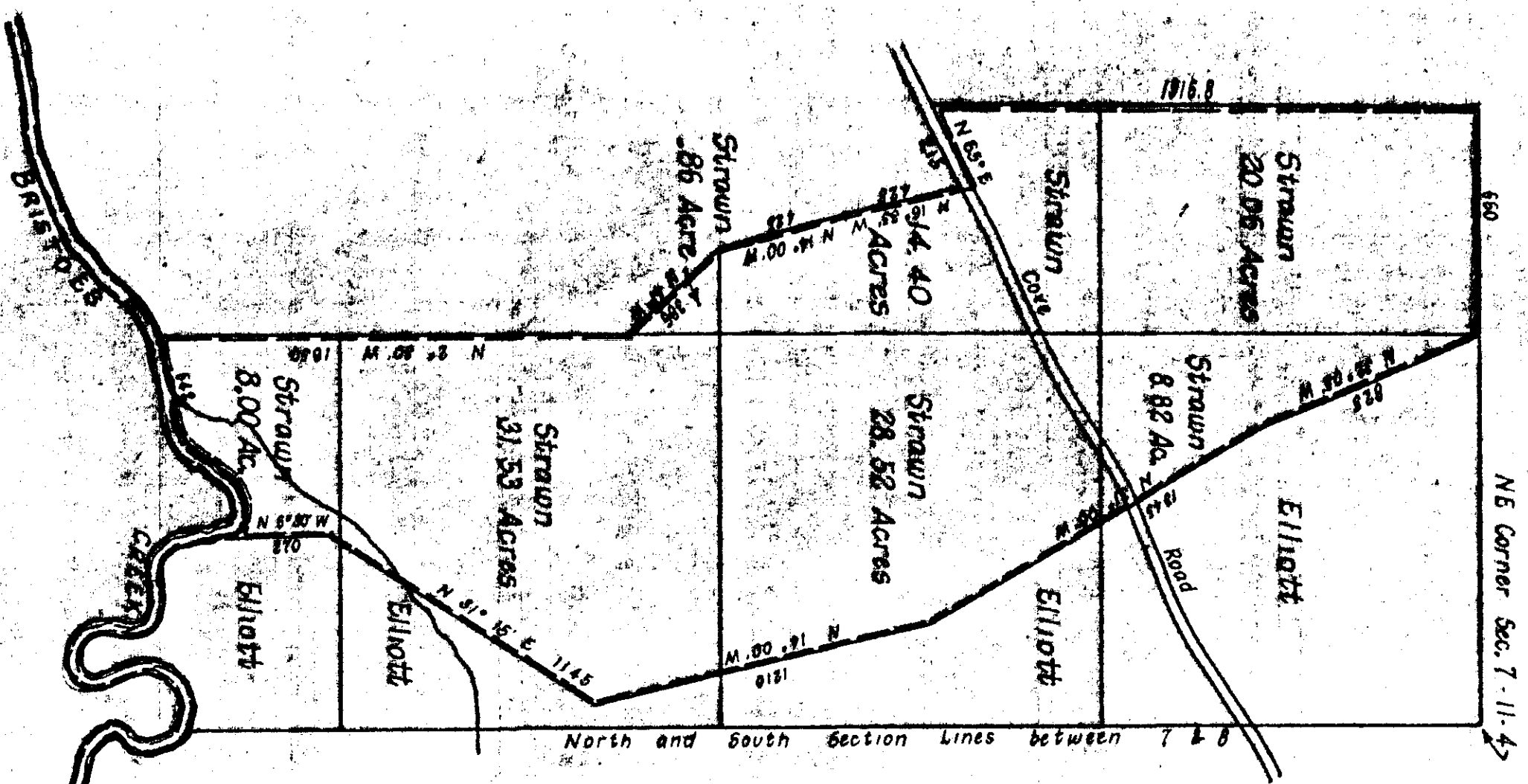


WM. S. STRAWN PROPERTY

LOCATED IN SEC. 7 TP 11 R 4 E
ENCLOSED BY DOTTED LINES AND
CONTAINING 112.24 ACRES - 1/31/19



SURVEYED BY E. H. LEE, C.E.

Filed in office for record the 25
day of February A. D. 1919 at 1
o'clock P. M. and duly recorded the
12 day of May, 1920.
L. F. Hertzberg
Judge of Probate