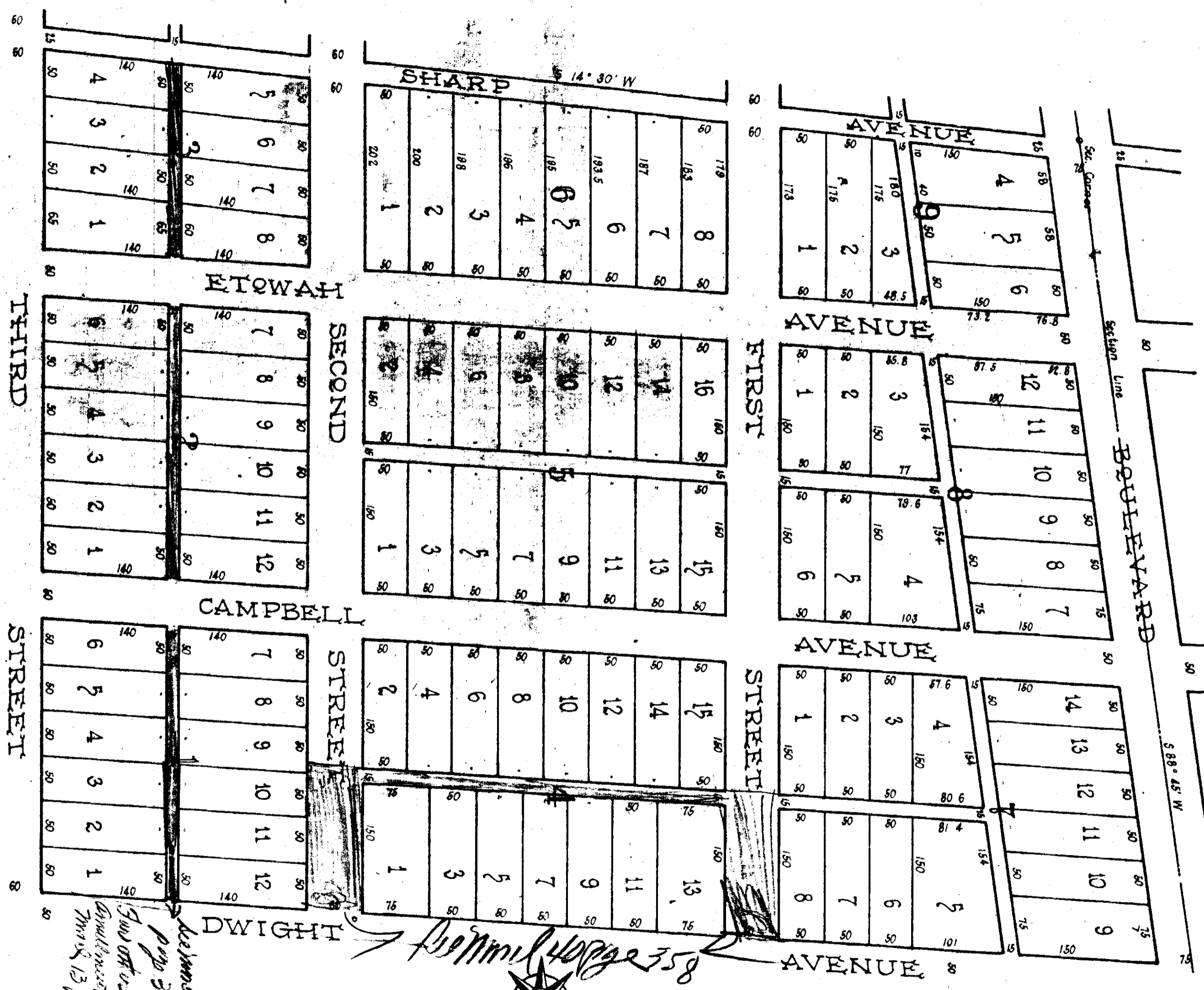


For Amended Plat Map see Sharp's original record to page 332

347

SHARP SUBDIVISION

TO SOUTH HIGHLANDS ADDN
BEING A PART OF THE WEST HALF OF FRAC. 4
SECTION 7 T12 R6 E, ETOWAH COUNTY, ALA.



I hereby certify this map to be a true and correct map of the Sharp Subdivision to South Highland as surveyed by me.
T. W. Lister, C.E.

Filed in office for record on the 11 day of November A.D. 1904 at - o'clock - M. and duly recorded the 30 day of November, 1904.
V. H. Lovejoy,
Judge of Probate.

Property of South Highlands Addition - Mitchell Goldman and associates

Note: Plat is incorrect. Distances shown on North Side of Second Street from Dwight Avenue to Etowah Avenue - 600' on South Side of same Street (Second) from Dwight Ave to Etowah Avenue - total distance - 650'

E. H. Lee, C.E.
Feb. 16, 1921.

*See also page 361
see also page 361
see also page 361*