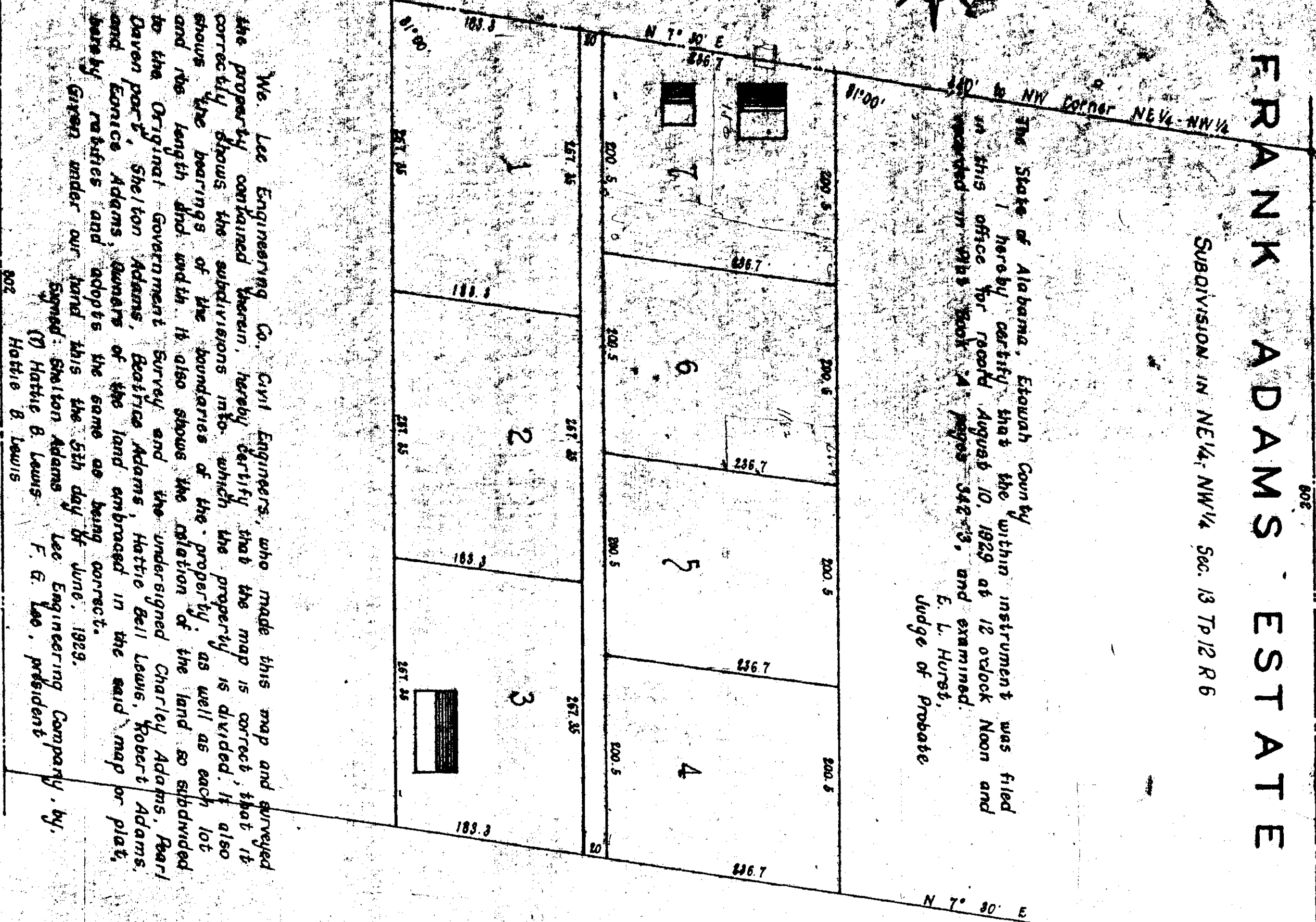
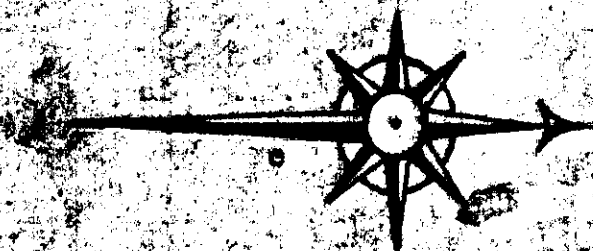


FRANK ADAMS ESTATE

SUBDIVISION IN NE 1/4 NW 1/4 Sec. 13 Tp. 12 R. 6 E

N.W. Corner NE 1/4 NW 1/4
Section 13 Tp. 12 S R. 6 E

The State of Alabama, Etowah County
I hereby certify that the within instrument was filed
in this office for record August 10, 1929 at 12 o'clock Noon and
examined in this Book 24 pages 342-35, and examined
E. L. Hurst,
Judge of Probate



We, Lee Engineering Co., Civil Engineers, who made this map and surveyed the property contained therein, hereby certify that the map is correct, that it correctly shows the subdivisions in so which the property is divided, that it shows the bearings the subdivisions in so, which the property is divided, that it shows the length and width, it also shows the relation of the land so subdivided to the Original Government Survey and the undersigned Charley Adams, Earl Davon part, Shelton Adams, Beatrice Adams, Hattie Bell Lewis, Robert Adams, and Eunice Adams owners of the land embraced in the said map or plat, hereby ratifies and adopts the same as being correct.

Given under our hand this 5th day of June, 1929.

Signed: Shelton Adams Lee Engineering Company by,
 Hattie B. Lewis F. G. Lee, president

Beatrice Adams Eunice Adams
 Robert Adams Charley Adams,
 Earl Adams Datepart Oubar

The State of Alabama, Etowah County
 I, K. J. Sullivan, a Notary Public in and for said State and County, hereby certify that F. G. Lee, whose name as President of Lee Engineering Company, and Charley Adams, Earl Davon part, Shelton Adams, Beatrice Adams, Hattie Bell Lewis, Robert Adams, and Eunice Adams, as owners of the property embraced in the within map or plat, and who are known to me, acknowledged before me on this day that, being informed of the contents of the conveyance, they executed the same voluntarily on the day the same bears date.

Given under my hand this 10 day of July, 1929.

(N. P. Seal) K. J. Sullivan,
 Notary Public