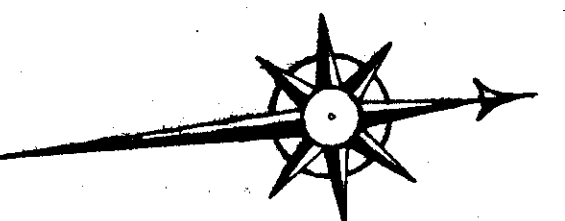
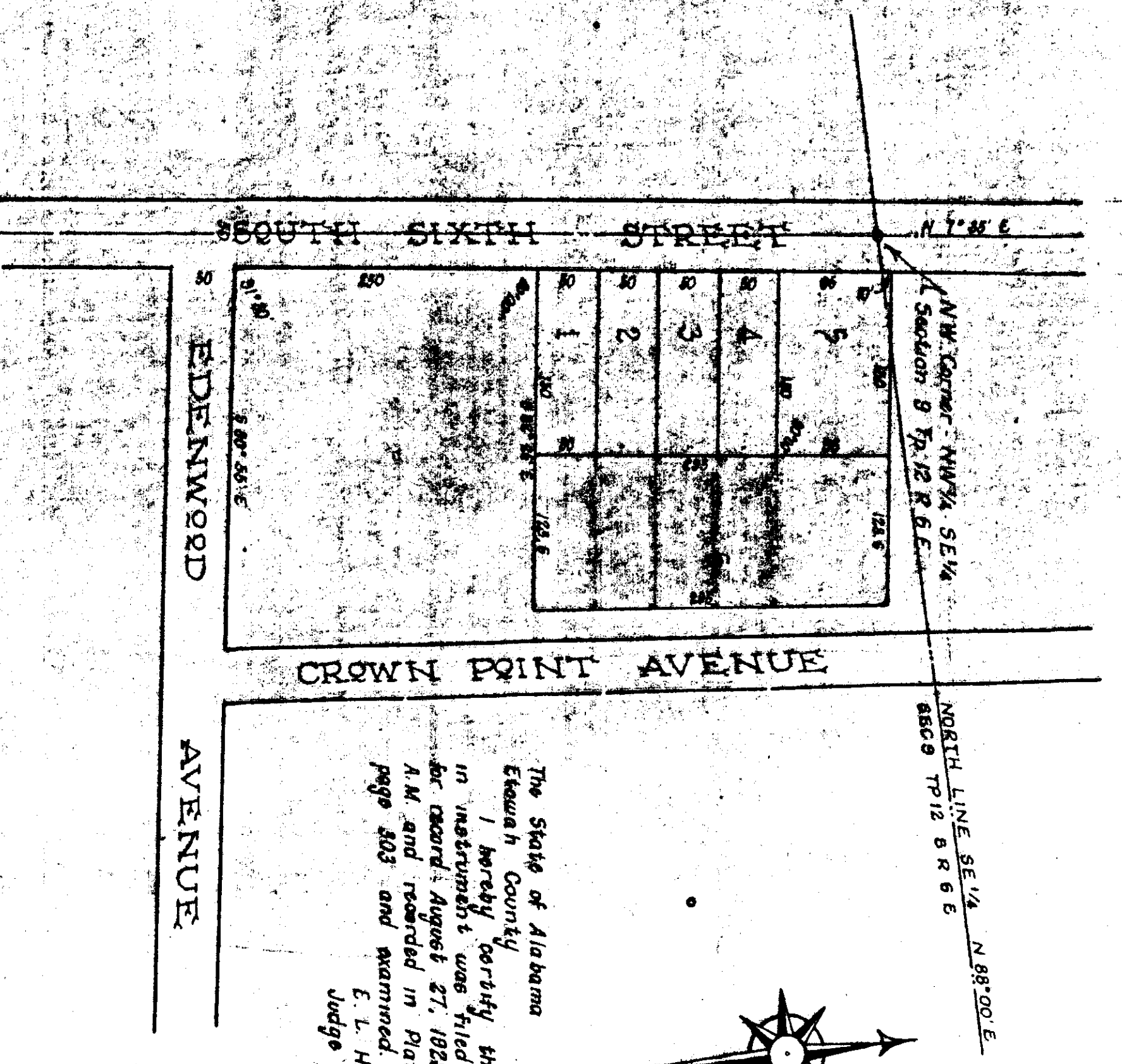


GOLIE - BIRD ADDITION

IN THE SW 1/4 - NE 1/4 AND NW 1/4 - SE 1/4 OF
SECTION 8 TP 12 S RANGE 6 E
GADSDEN, ALABAMA



The State of Alabama
Etowah County
I hereby certify that the within instrument was filed in this office for record August 27, 1929 at 11 o'clock A.M. and recorded in Plat record "A" page 303 and examined.
E. L. Hurst
Judge of Probate

We, Lee Engineering Company, who made this map and surveyed the property contained therein, hereby certify that this map is correct, that it correctly shows the subdivisions into which the property is divided. It also shows each lot and its number, length and width, as well as the bearings of the boundaries of the property. It also shows the relation of the lot of the lands so subdivided to the Original Government Survey and the undersigned Golie Bird, owner of the lands so subdivided, hereby ratifies and adopts the same as being correct. Given under our hand and seal this 27 day of May, 1929.

Lee Engineering Company
by: F. G. Lee, president
Signed: Golie Bird, Owner

The State of Alabama, Etowah County,

I, Rona Blackwood, a Notary Public in and for said State and County, hereby certify F. G. Lee, whose name as president of Lee Engineering Company and Golie Bird are names of the lands embraced in the within map of plat, and who are known to me by knowledge before me on this day that being informed of the contents of the certificate they executed the same voluntarily on the day the same were made.

Given under my hand this the 27th day of August, 1929.
Rona Blackwood
Notary Public