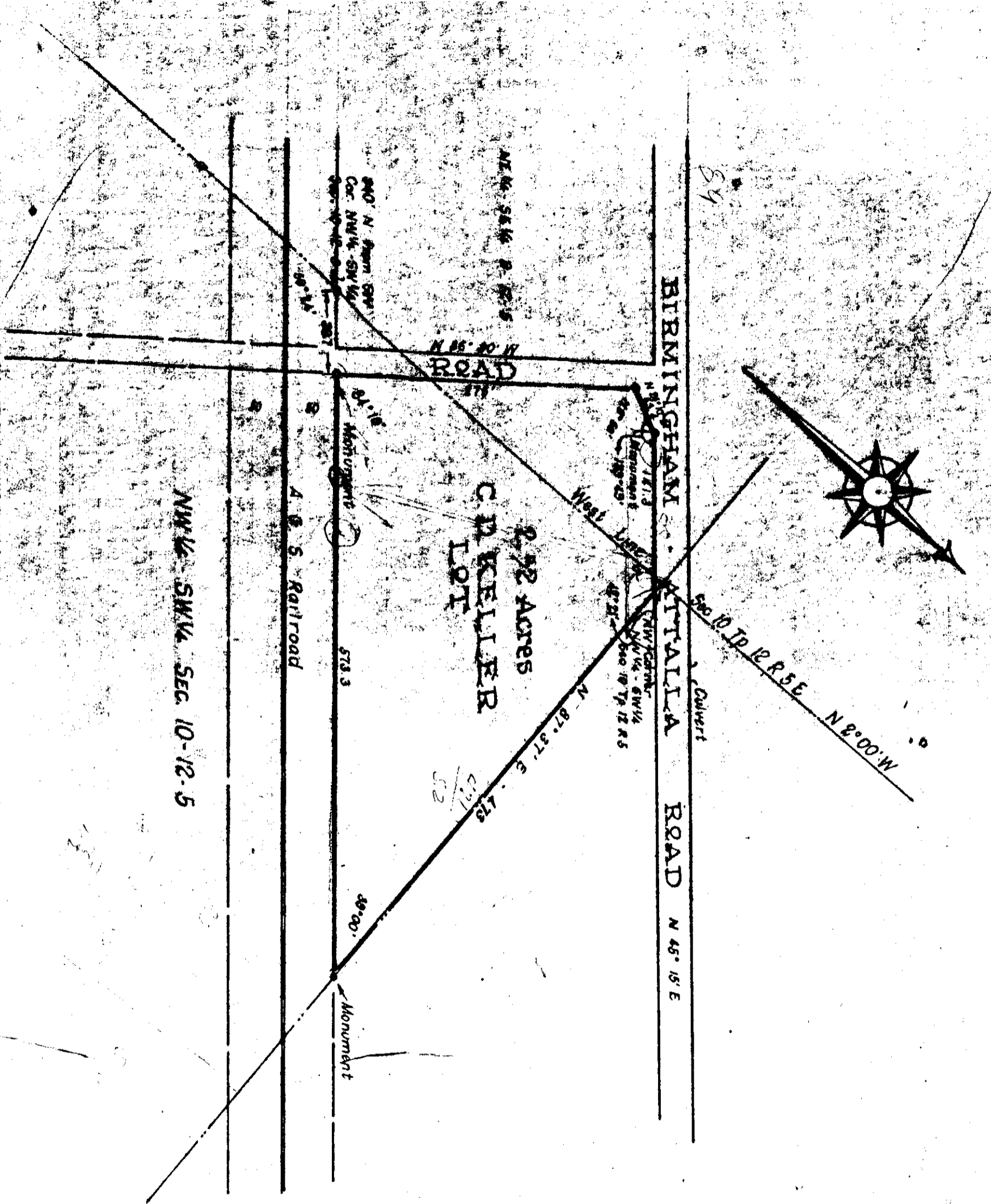


# EXHIBIT "A"



The State of Alabama, Etowah County  
 I hereby certify that the within conveyance was filed  
 in this office for record 25th October, 1924 at 5 o'clock P. M.  
 and recorded in Plat Book A, page 299.  
 H. Ross Gilliland  
 Judge of Probate

I hereby certify that this map correctly shows the  
 location, angles and distances on the C. D. Keller lot lying in  
 the NW Corner of the NW 1/4 of the SW 1/4 Section 10 and the  
 NE Corner of the NW 1/4 of the SE 1/4 Section 9 T. 12 R. 5 East,  
 Etowah County, Alabama as surveyed by me this the 11th day  
 of April, 1925.

F. G. Lee, Surveyor