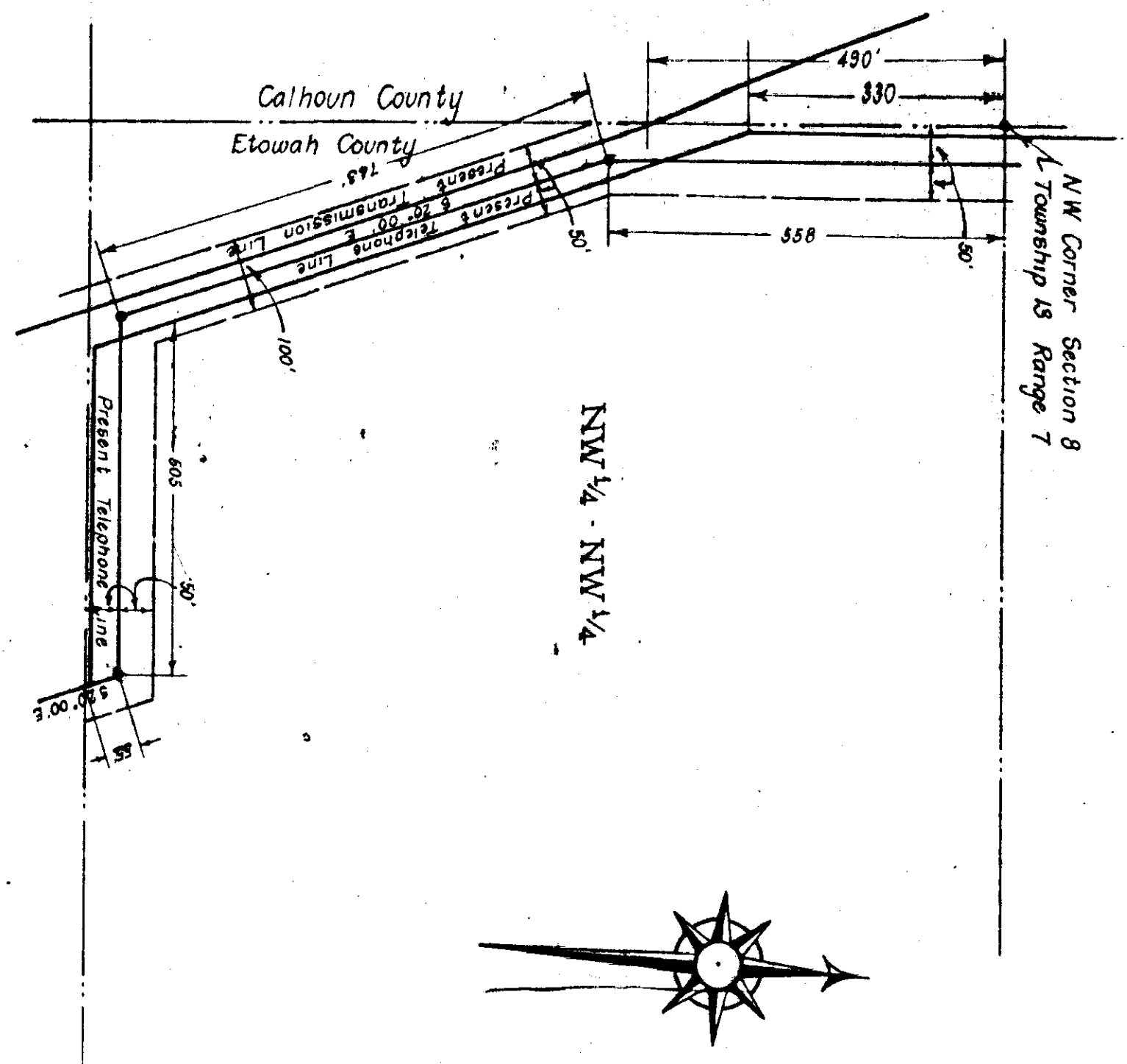


EXHIBIT "A"

ATTACHED TO AND MADE A PART OF AN AGREEMENT DATED APRIL 6, 1920 BETWEEN LEHIGH PORTLAND CEMENT COMPANY AND THE ALABAMA POWER COMPANY, LEHIGH PORTLAND CEMENT CO. BY, DANIEL E. RITTER, V.P. ALABAMA POWER COMPANY, BY, THOMAS W. MARTIN, PRES.



DR. C. E. H. Cor.	Rev. 191-	Subject: Lock 12 - Gradsden Transmission Line
TR. C. E. H. App.	Rev. 191-	Lehigh Portland Cement Company Land.
O.K. -	Scale: 1"-200'	Detail: Thru NW 1/4 - NW 1/4, S. 8 T. 13 R. 7 E. Etowah Co. Ala.
		A

Filed in office for record the 16 day of June A.D. 1920 at 3 o'clock P.M. and duly recorded the 17 day of June, 1920.

L. L. Herzberg
Judge of Probate