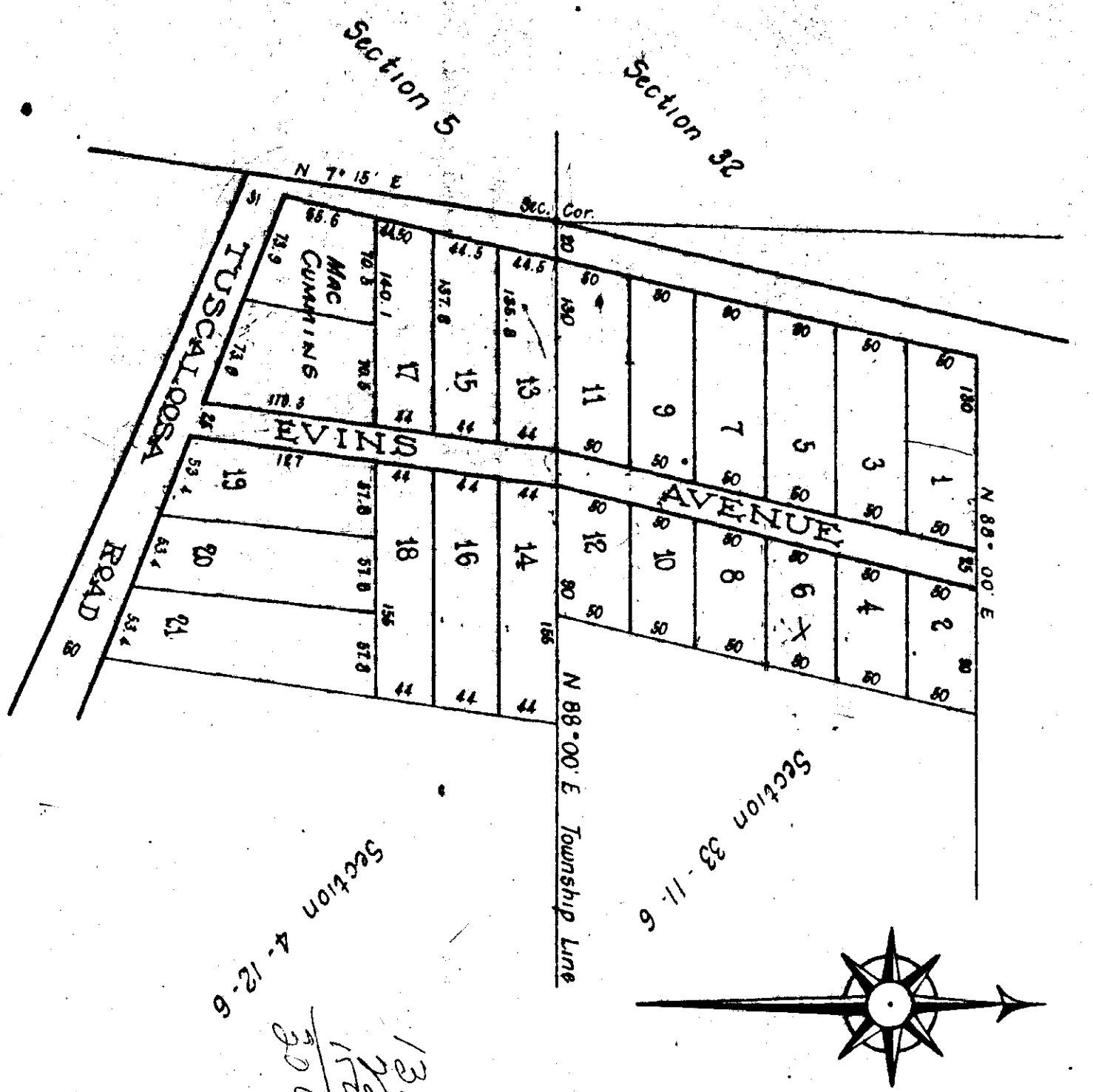


CUMMINS ADDITION

GADSDEN, ALABAMA

I hereby certify this to be a true and correct map of the herewith described property as surveyed by me this the 14th day of February, 1903.
T. W. Lister, C.E.



The State of Alabama, Etowah County
We, E. W. Green and B. R. Pegram, owners of the land described in the above plat and surveyed by T. W. Lister, hereby reify and adopt the same as correct. Given under our hand this the 6 day of July, 1905.

E. W. Green
P. R. Pegram

The State of Alabama, Etowah County
I, J. W. Penn, Judge of Probate in and for said County hereby certify that E. W. Green and P. R. Pegram, whose names are signed to the foregoing declaration and who are known to me, acknowledged before me on this day that being informed of the contents of the foregoing declaration, they signed the same voluntarily on the day the same bears date.
Given under my hand this 6 day of July, 1905.

J. W. Penn
Judge of Probate

Filed in office for record the 30 day of March A. D., 1903 at 3 o'clock P. M. and duly recorded the 30 day of March, 1905.
J. H. Lovejoy
Judge of Probate