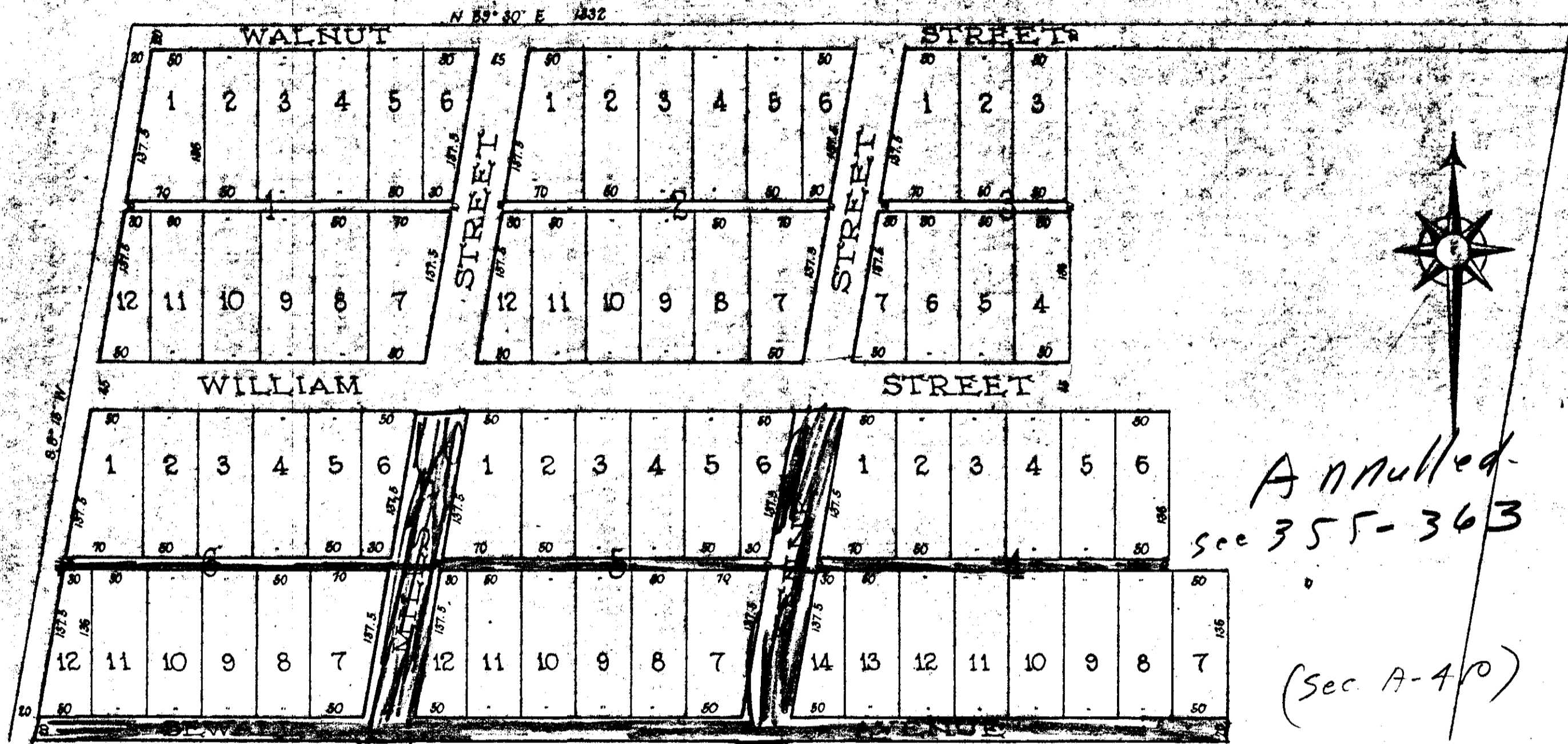


NORRIS ADDITION

TO ALABAMA CITY, ALABAMA
 N 1/2 FRAC. 1 SEC. 7 Tp 12 R 6 E - 20 Acres MORE OR LESS - T. W. LISTER, C. E.



*Annulled -
 see 355-363*

(Sec A-4^{ro})

The State of Alabama, Etowah County
 I, H. B. Myers, a Notary Public in and for said State and County, hereby certify that J. J. Norris, Sr., E. W. Green and A. D. Simpson, whose names are signed to the foregoing plat of Norris Addition to the City of Alabama City, Ala., and who are known to me acknowledged before me on this day that being informed of the contents of said map they signed the same voluntarily on the day the same bears date. Given under my hand this the 10th day of September, 1903.

(Seal) H. B. Myers,
 Notary Public

We, J. J. Norris, Sr., E. W. Green, and A. D. Simpson, the owners of the property shown in this map, hereby ratify and adopt this map and plat as correct map of Norris Addition to Alabama City, Ala., and hereby vacate and annul the plat of Norris Addition to Alabama City recorded on page 200 of Town Plats office of Judge of Probate of Etowah County, Ala. dated this 8th day of Sept., 1903.

J. J. Norris, Sr.
 E. W. Green
 A. D. Simpson

Filed in office for record on the 16 day of September, A. D., 1903 at 10 o'clock A. M. and duly recorded the 13 day of October, 1903.

J. H. Lovejoy
 Judge of Probate