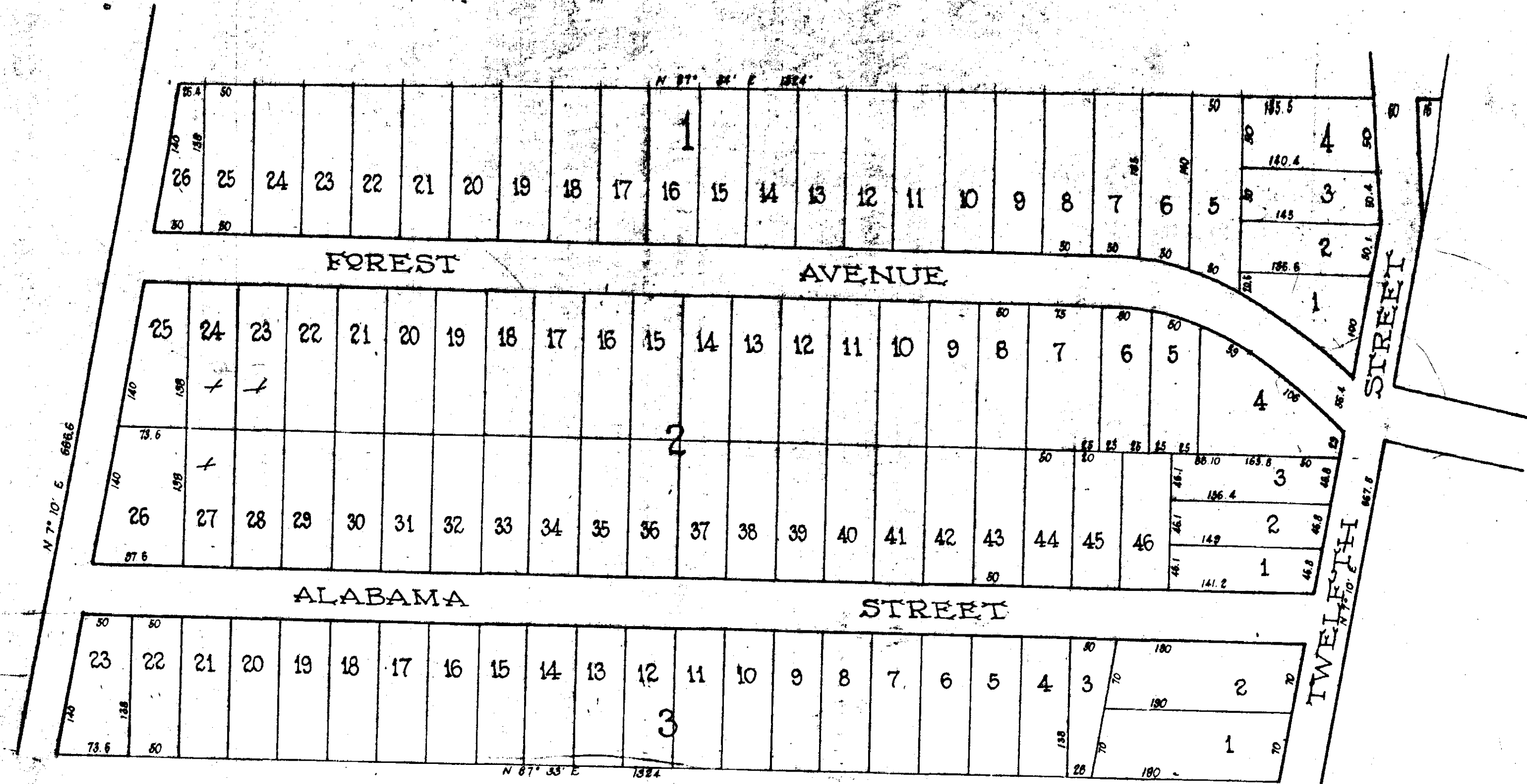
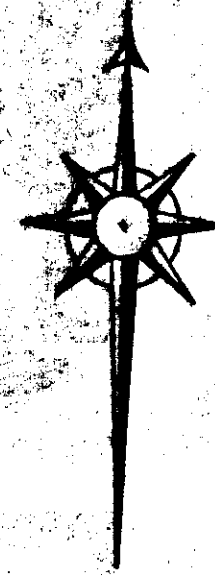


# TALLMAN ADDITION



I hereby certify this drawing to be a true and correct Survey of the Tallman Addition to the City of Gadsden, Alabama as surveyed by me March, 1903.  
 T. W. Lister, C. E.

Filed in office for record on the 4th day of April A.D. 1903 at 10 o'clock A.M. and duly recorded the 6 day of April, 1903.  
 J. H. Lovejoy  
 Judge of Probate

See Miscellaneous Record 'A' page 370 for ratification of this plat.