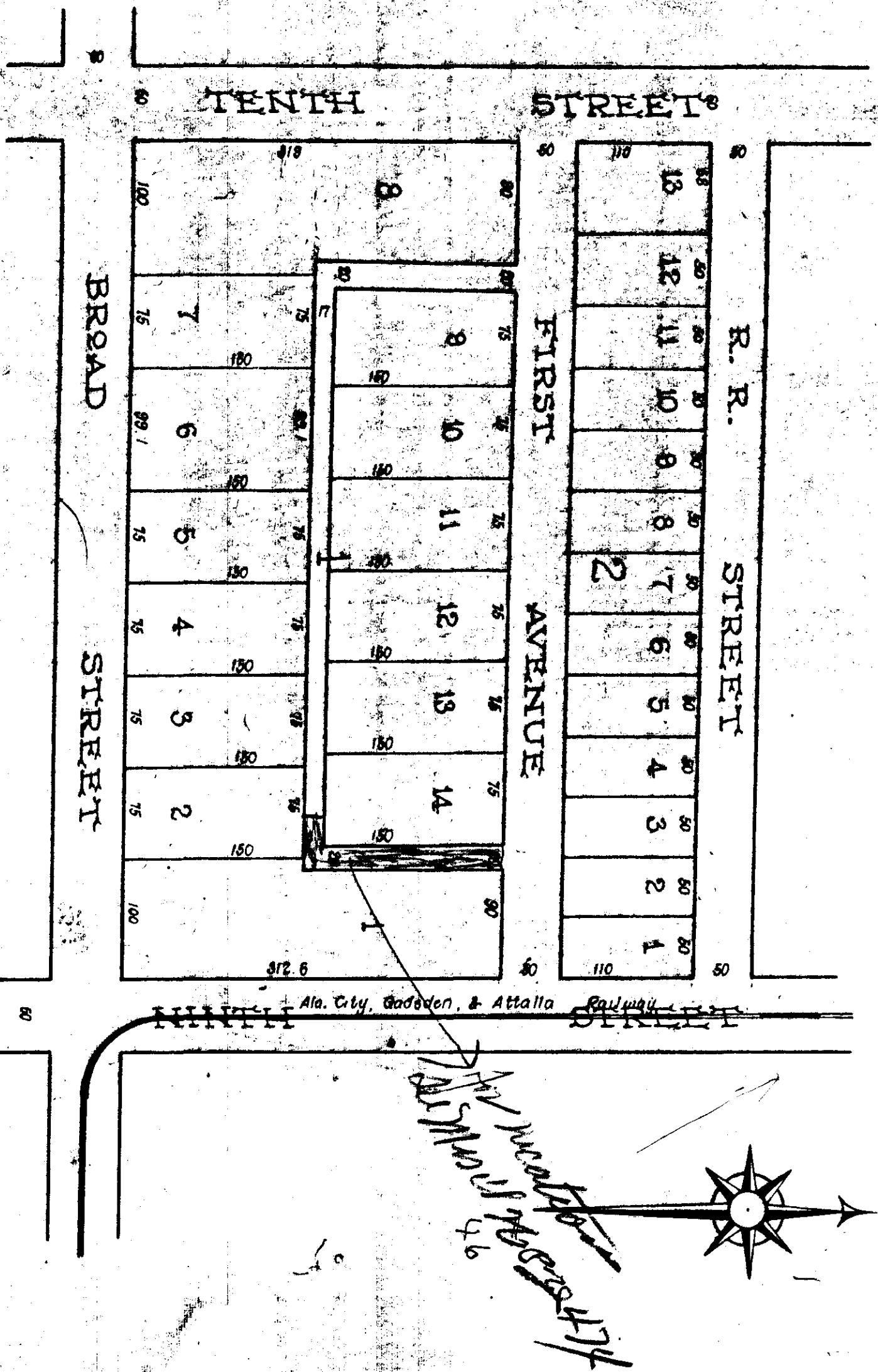


# PROPERTY OF R. B. KYLE AND HEIRS OF M. B. KYLE

Bound on the North by R. R. Street,  
on the East by Ninth Street on the  
South by Broad Street and on the West  
by Tenth Street. Surveyed Oct. 1, 1902.



State of Alabama, Etowah County  
I hereby certify that the within plat was filed in this office for  
record November 1, 1902 at 8 o'clock A.M. and recorded in Book 74 of  
Town Plat. November 3, 1902.

J. H. Lovjoy,  
Judge of Probate

Surveyed by T. W. Lester

Dealing Along  
Main 75-8-9-143