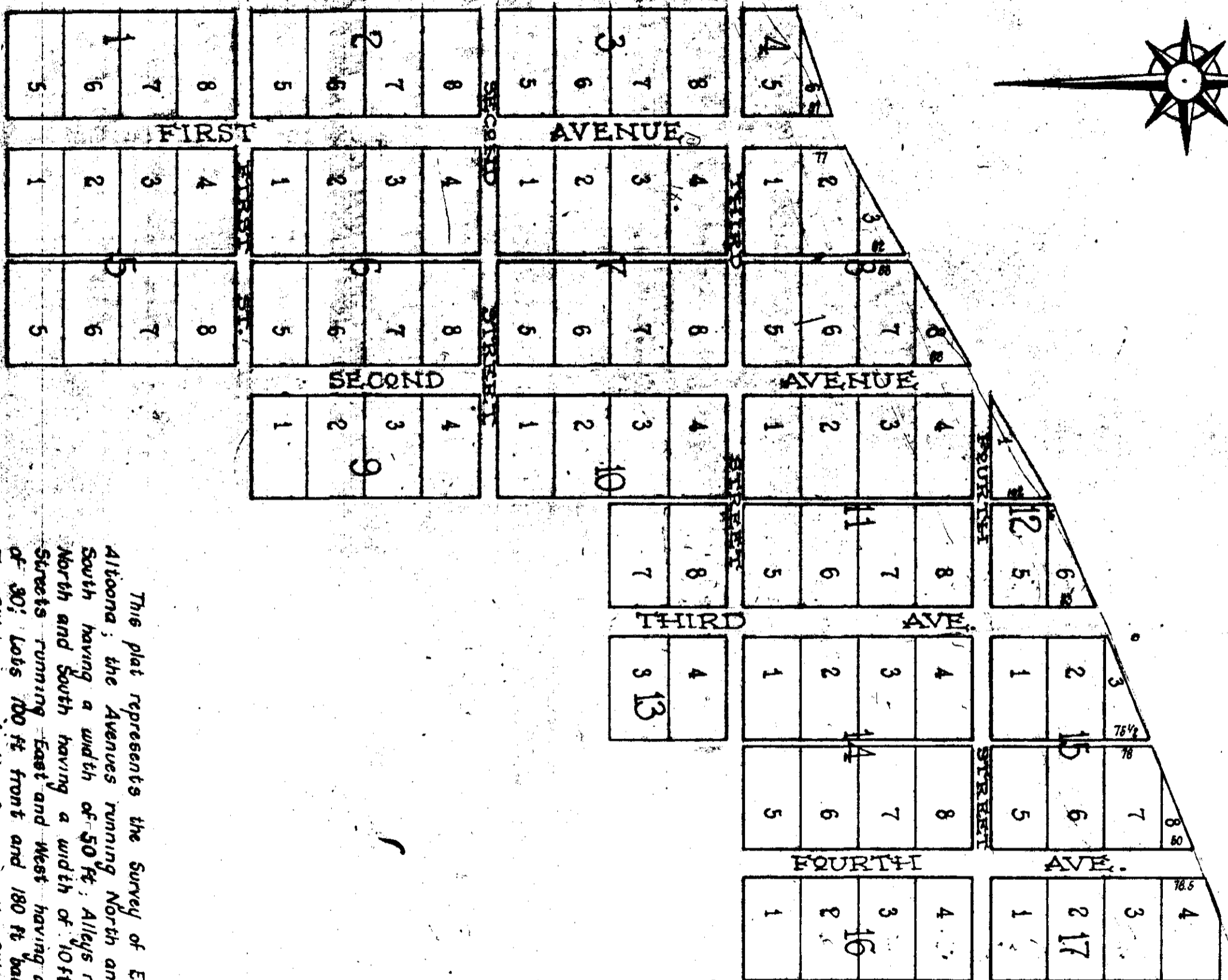
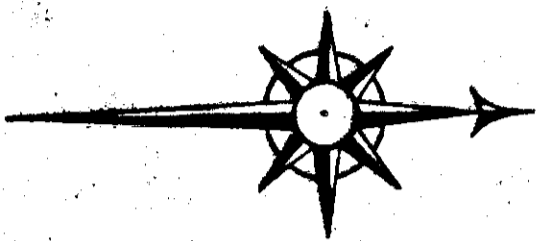


EAST ALTOONA



This plat represents the Survey of East Altoona; the Avenues running North and South having a width of 50 ft; Alleys running North and South having a width of 10 ft; Streets running East and West having a width of 30 ft; Lots 100 ft front and 180 ft back. The SW corner of this Survey is the SW Corner of SE 1/4 of Section 34 T 11 N 3 E. Surveyed November 15, 1800.

Henry M. Jones
County Surveyor

Recorded November 6, 1902 - L.H. Langley - Judge of Probate