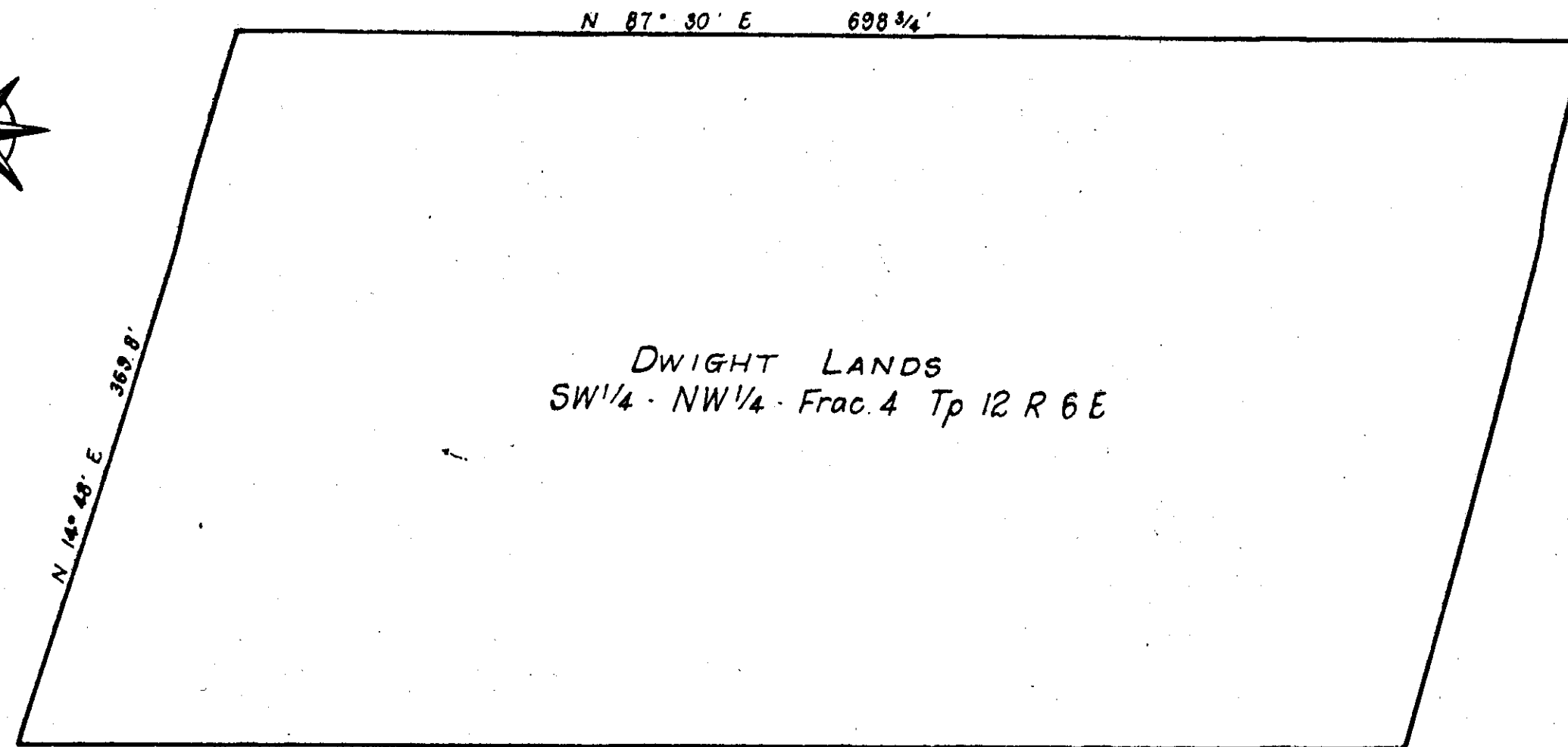
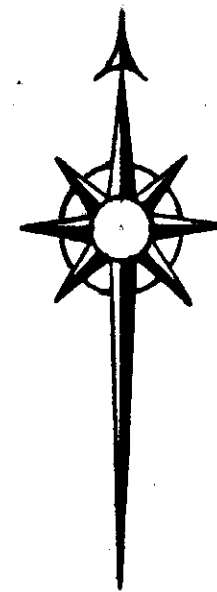


WALSHE ADDITION

ALABAMA CITY, ALA.



The State of Alabama, Etowah County
I, T. W. Lister, a Civil Engineer hereby certify that the above is a correct map of a Survey made by me this day, made of all that part of the SW 1/4 of the NW 1/4 of fraction 4 Section 6 Tp 12 Range 6 E, lying South of the road bed of the Alabama City, Attalla & Gadsden Railway (Electric Railway) in Alabama City, Ala. and known as the Walshe Addition to said City.
Dated this November 1, 1902.

T. W. Lister, C.E.

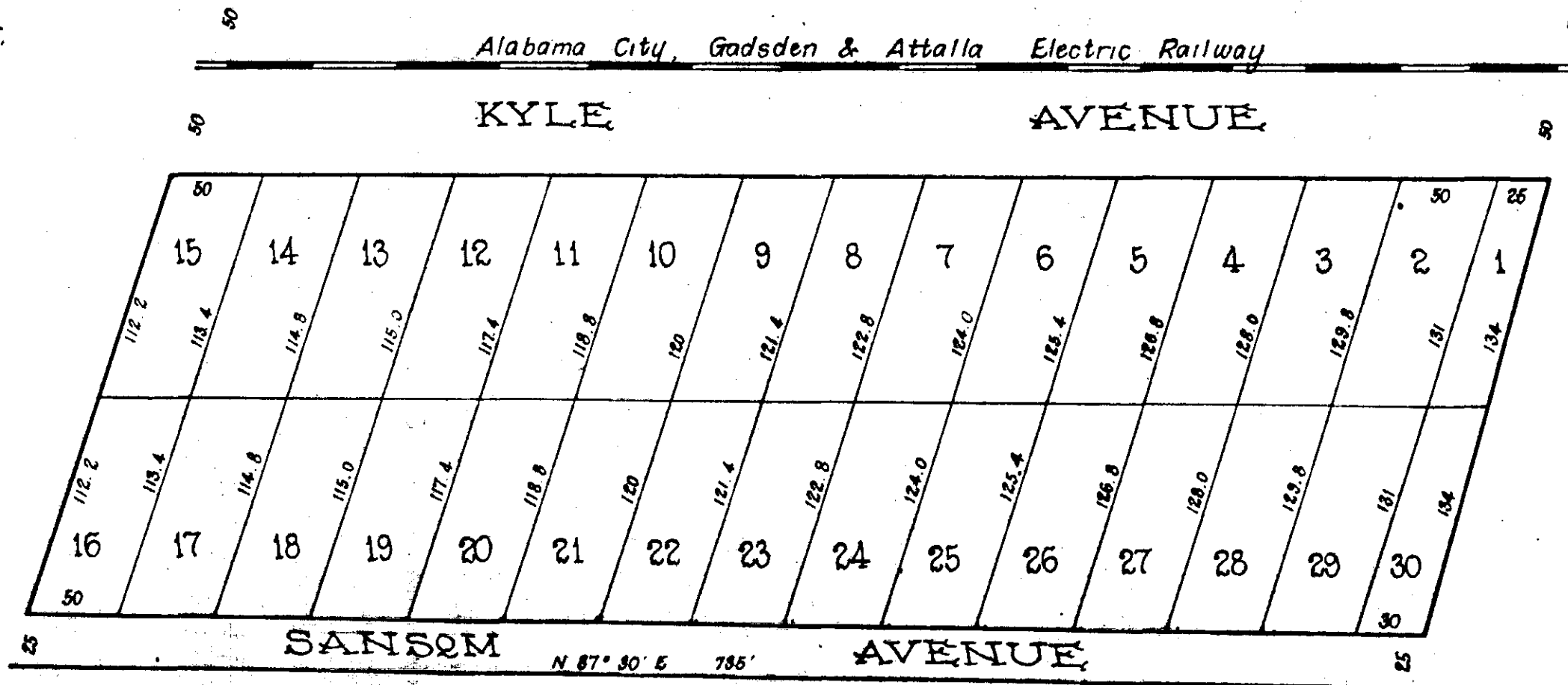
I hereby accept and adopt this plat as the plat of the Walshe Addition to the City of Alabama City in Etowah County, Ala., and hereby confirm the certificate of T. W. Lister, C. E., hereon. This November 3, 1902.

F. S. Walshe, by
B. T. Walshe,
Attorney in fact, owner

The State of Alabama, Etowah County
I hereby certify that the within map was filed in this office for record November 2, 1902 at 3 o'clock P.M. and recorded November 6, 1902. in Book of Town Plats.

J. H. Lovejoy
Judge of Probate

Surveyed and mapped by me this the 1st day of Nov., 1902.
T. W. Lister, C.E.



240