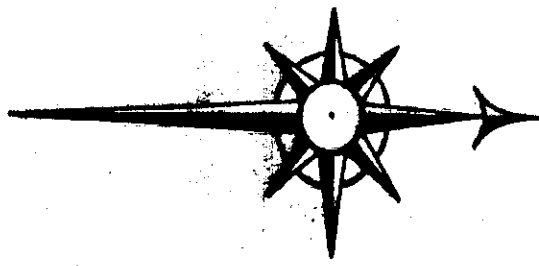


BURGESS PLACE

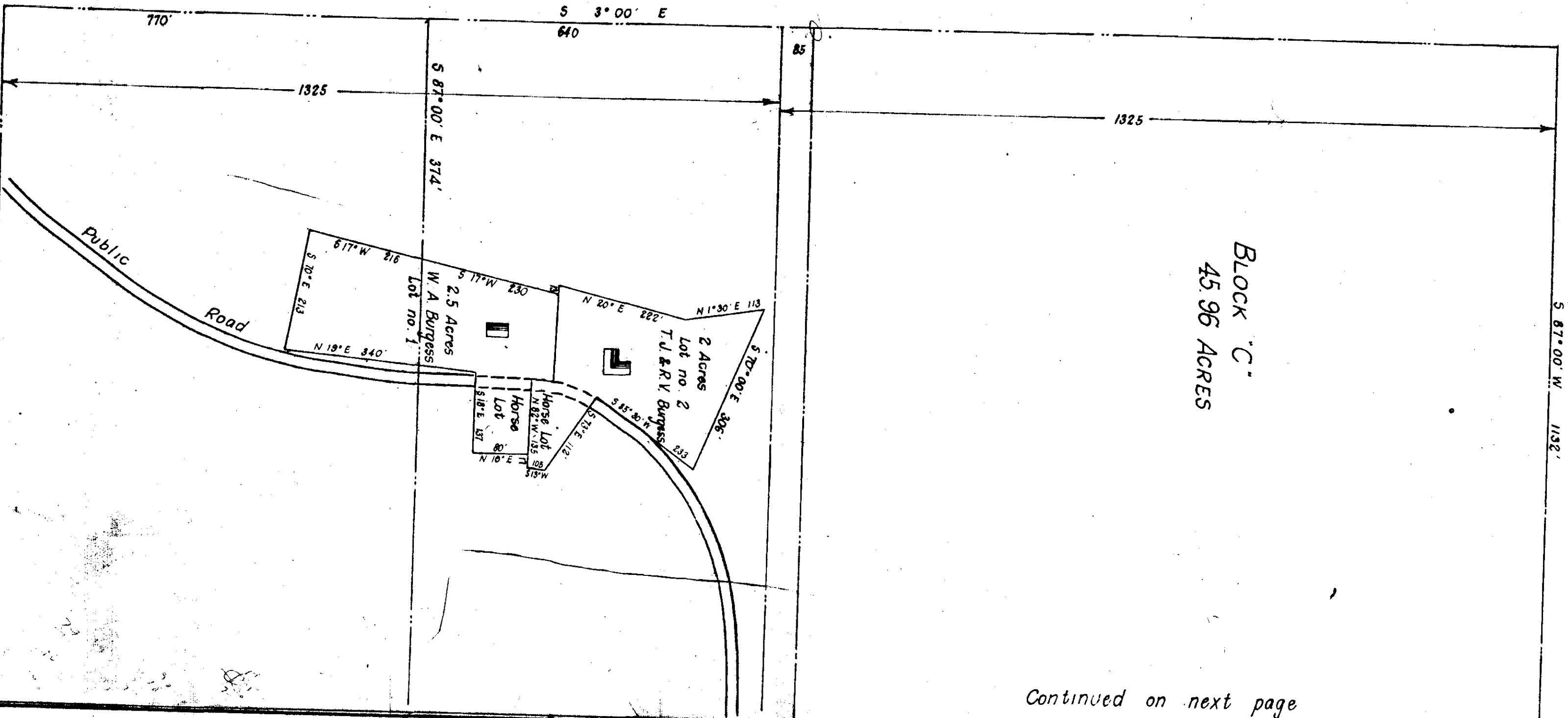
Part of SW Quarter
Section 28-T-10-R-6
Surveyed and platbed by
C. N. Alford, Civil Engineer
See Page 231



Variation - 2° 45' E

Filed in office for record on the
1st day of November A.D. 1900 at
10 o'clock A.M. and duly recorded on
the 19th day of November, 1900.
J. H. Lowrey
Judge of Probate

Block "C"
45.96 ACRES



Continued on next page