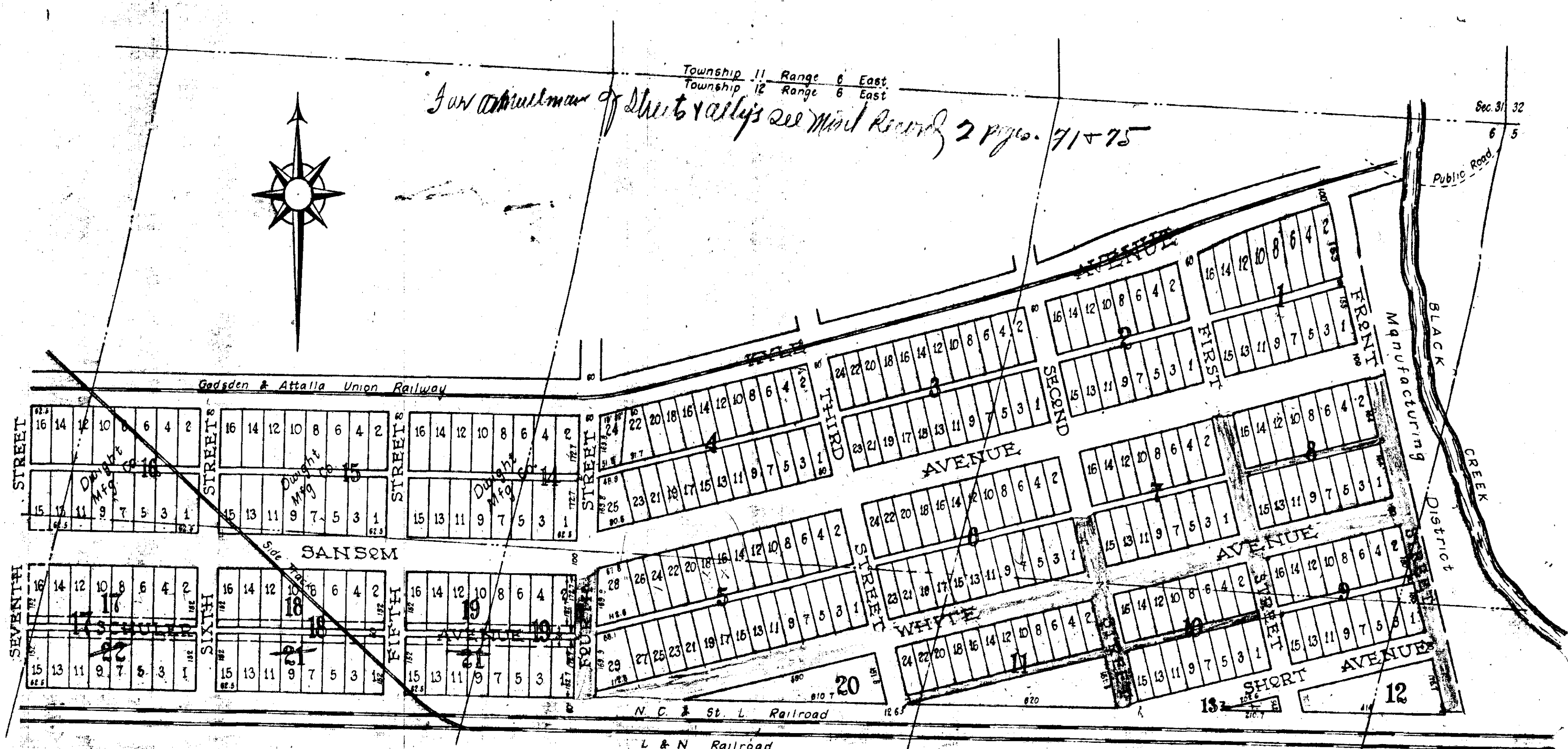


Jan. 1899
Township 11 Range 6 East
Township 12 Range 6 East
See Plat Records 2 pgs. 71 & 75

Sec. 31 32
6 5



Change in Blocks 17, 18, & 19:
Street made in center of Blocks 17, 18, & 19 in place of Alley and Blocks 17, 18, & 19 North of Schuler Avenue and Blocks 20, 21 & 22 South of Schuler Avenue. Schuler Avenue is laid out 60' wide and running from Fourth to Seventh Streets. Lots reduced from 172'-152' deep.
R. B. Kyle, owner
November 28, 1902.

The above plat was filed in office August 9, 1899 and recorded August 10, 1899.
J. H. Lovejoy
Judge of Probate
Surveyed by C. N. Alford - Civil Engineer.
April 18, 1899.

**R. B. KYLE'S
PROPERTY**
ALABAMA CITY, ALA.