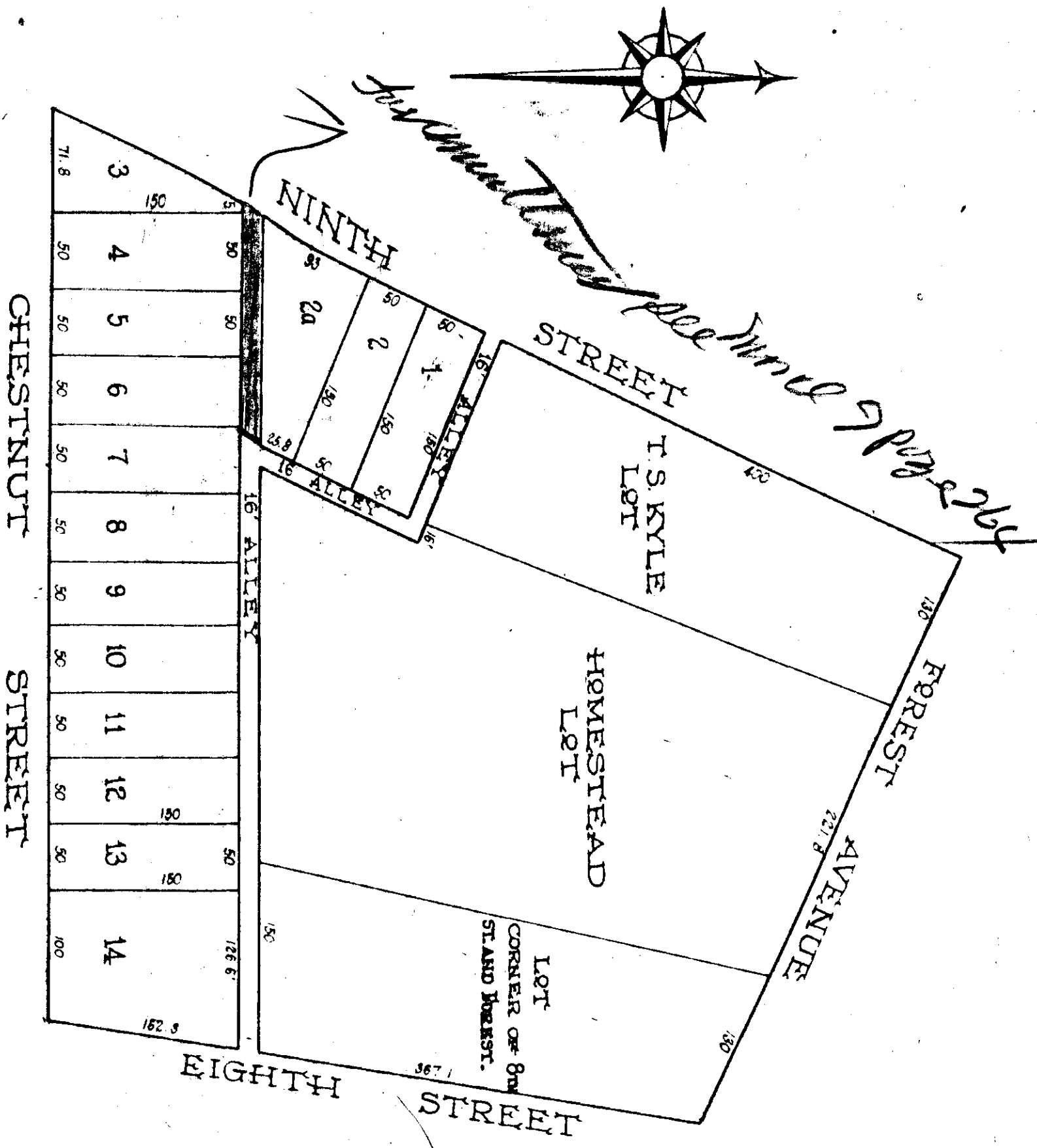


M. V. KYLE ESTATE

LYING BETWEEN FOREST AVE ON THE NORTH, CHESTNUT ST. ON THE SOUTH, 8TH ST. ON THE EAST & 9TH ST. ON THE WEST.



Gadsden Alabama, October 7, 1893.

I, P. S. Fitzgerald, Civil Engineer and Surveyor, hereby certify that this is a correct map of the property described and surveyed and subdivided by me.

P. S. Fitzgerald

As heirs of M. V. Kyle, deceased, we hereby adopt the subdivision of the square bounded on the North by Forest Avenue on the East by Ninth Street, on the South by Chestnut Street, and on the West by Ninth Street, made by P. S. Fitzgerald, and agree that we will abide by this survey in the distribution of the property, as heirs of M. V. Kyle, deceased.

- Nena Kyle Elliott J. M. Elliott, Jr.
- Bessie K. Beggs T. S. Kyle
- Robbie E. Kyle Edith Kyle Thompson
- Florrie M. Kyle E. E. Thompson
- W. J. Beggs

Subscribed to before me this 6 day of December, 1897.
Jos. Balfour
Notary Public

Filed in office for record April 19, 1899 and recorded April 20, 1899.
J. H. Lovejoy
Judge of Probate