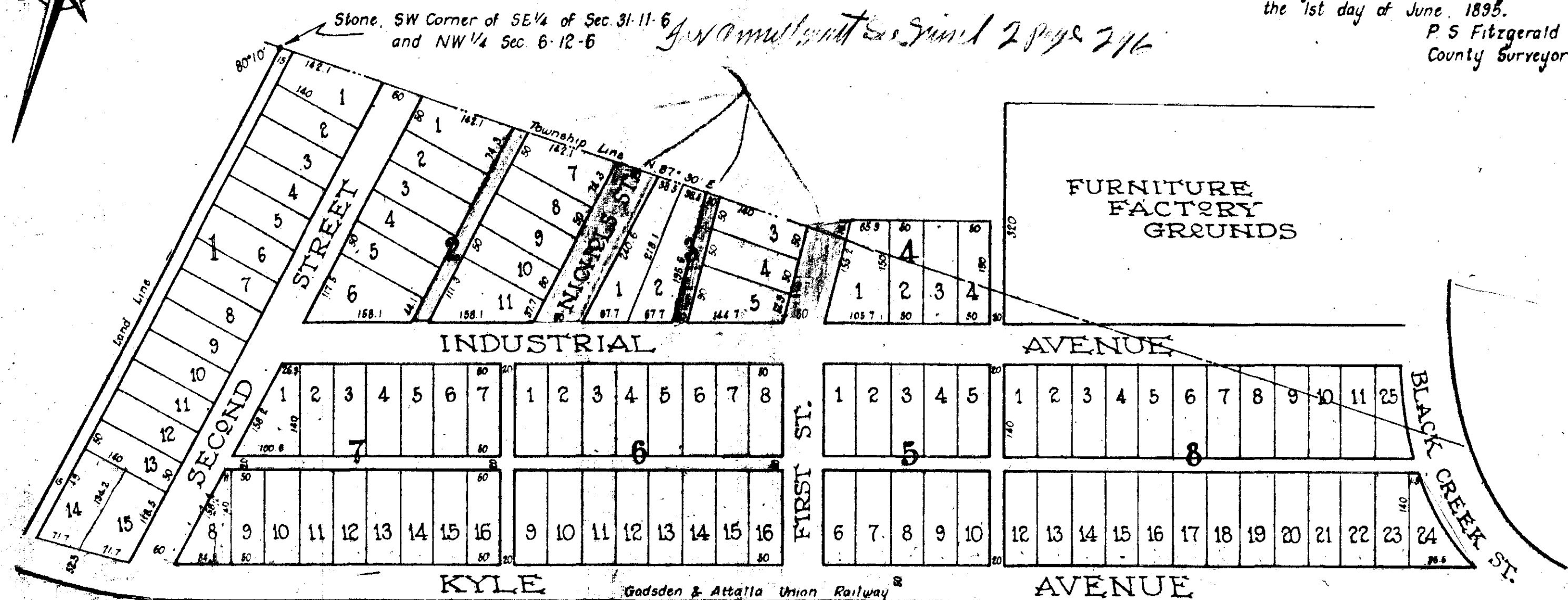
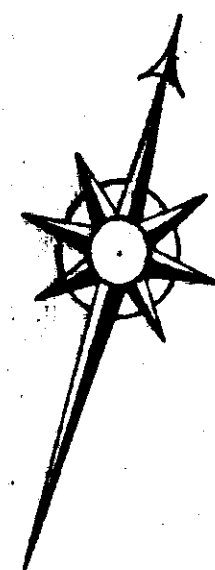


KYLE'S ADDITION TO ALABAMA CITY

A portion of the NE 1/4 of Section 6 Township 12 Range 6 East Alabama City, Alabama, North of the main line of the G & A. U. Railway owned by R. B. Kyle and surveyed and subdivided by P. S. Fitzgerald, C.E. County Surveyor.

I, P. S. Fitzgerald, County Surveyor hereby certify that this is a correct map of the above described land as surveyed and subdivided by me this the 1st day of June, 1895.
P. S. Fitzgerald
County Surveyor



Filed in office for record. Recorded October, 1895. - James M. Moragne, Judge of Probate