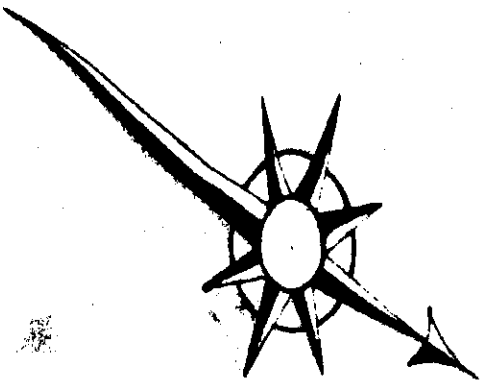
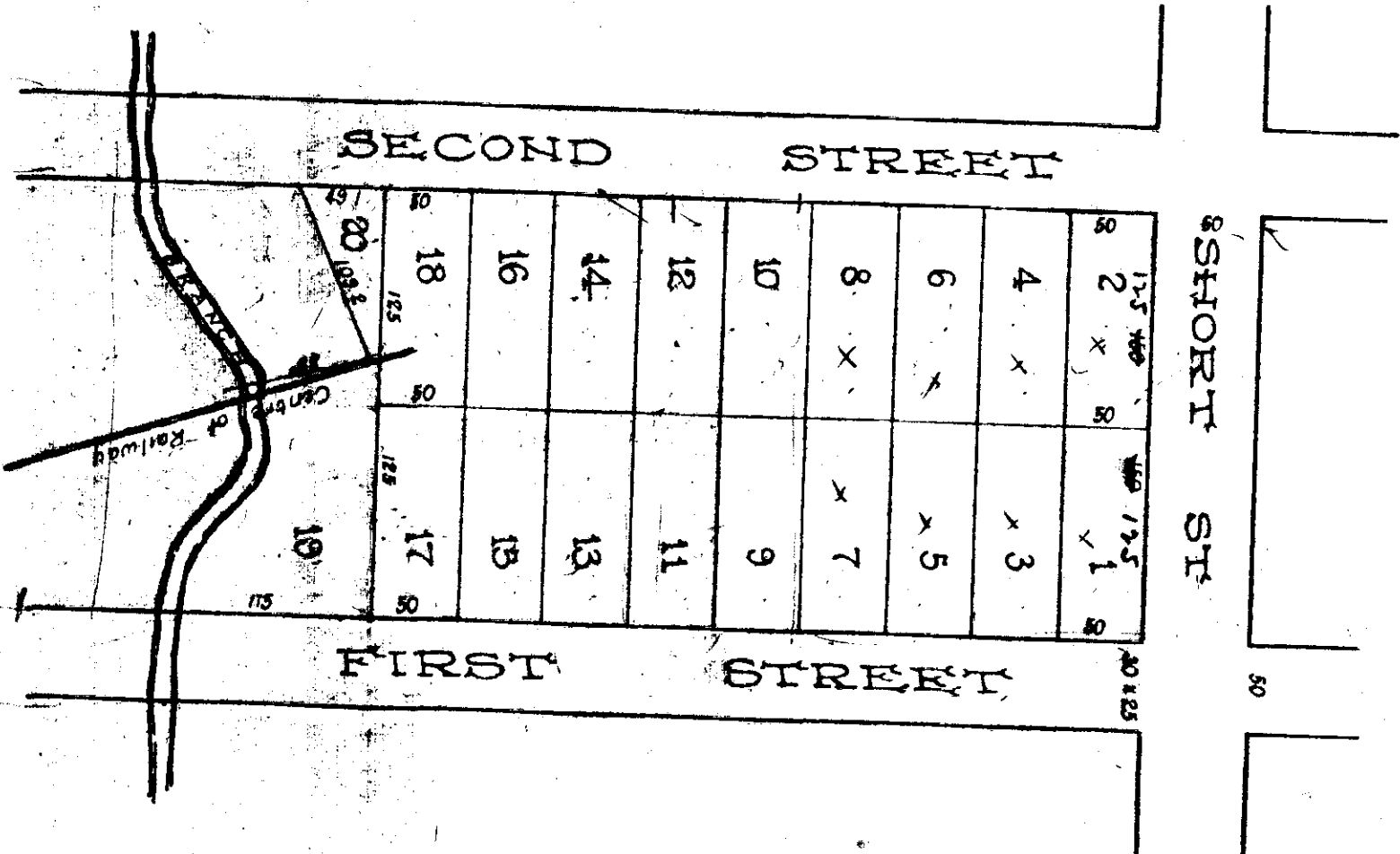


J. R. HUGHES AND SOUTHERN LUMBER CO.



MAP OF PLAT OF GROUND INCLUDED
BETWEEN FIRST AND SECOND STS.
AND SHORT ST AND BRANCH AS
SURVEYED AND SUBDIVIDED BY
P. S. FITZGERALD, C. E. DEC. 1890.



I, P. S. Fitzgerald, Surveyor hereby
certify that this is a correct map of
the above described property as sur-
veyed and subdivided by me
January 1, 1891.

P. S. Fitzgerald

The State of Alabama, Etowah County
We the undersigned owners of the land platted and subdivided by P. S. Fitzgerald Civil
Engineer do hereby ratify and adopt the same as correct, given under our hands this the
1st day of January A. D. 1891.

J. R. Hughes
Southern Lumber Company by:
J. E. Line, Secretary

The State of Alabama, Etowah County
I, J. A. Tallman, Judge of Probate, hereby certify that J. R. Hughes and The Southern
Lumber Company by J. E. Line, Secretary, whose names are signed to the foregoing decl-
aration and who are known to me, acknowledged before me on this day that being in-
formed of the contents of the conveyance, they executed the same voluntarily on the day
the same bears date.
Given under my hand this the first day January, 1891.

J. A. Tallman
Judge of Probate

Filed in office January 1, 1891. Recorded January 21, 1891.
J. A. Tallman
Judge of Probate