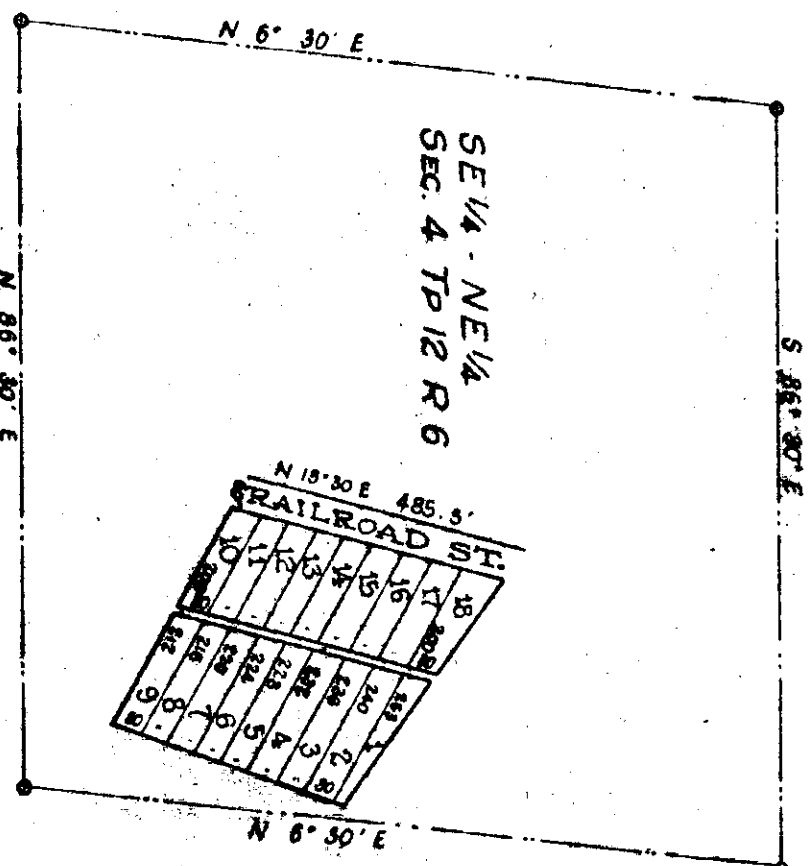
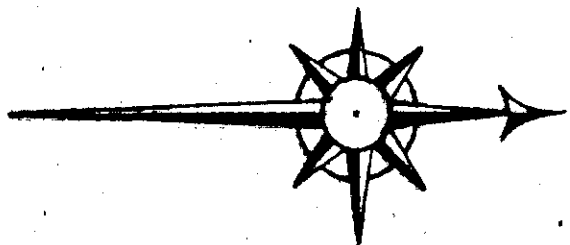


ALVA F. TRIPPE PLAT

ANNULLED AND SET ASIDE

SEE MISCL. RECORD 'A' PP 360

FOR NEW PLAT SEE PAGE 323



The State of Alabama, Etowah County
 This is to certify that the above map is a correct plat or map of the land surveyed by me, it being a part of the SE 1/4, NE 1/4 of Section 4 Township 12 Range 6E. July 26, 1887.

W. N. Cowan, Surveyor

The State of Alabama, Etowah County
 I, Alva F. Trippe, owner of the land described and platted by W. N. Cowan, Surveyor, as above, hereby ratify and adopt the same as correct. Given under my hand this the 6th August, 1890.

Alva F. Trippe, owner

The State of Alabama, Etowah County
 I, J. A. Tallman, Judge of Probate, hereby certify that Alva F. Trippe whose name is signed to the foregoing declaration and who is known to me, acknowledged before me on this day that being informed of the contents of the declaration, he executed the same voluntarily on the day the same bears date. Given under my hand this the 6th day of August, 1890.

J. A. Tallman
 Judge of Probate

Filed in office for record August 6th, 1890. Recorded August 7th, 1890.

J. A. Tallman
 Judge of Probate