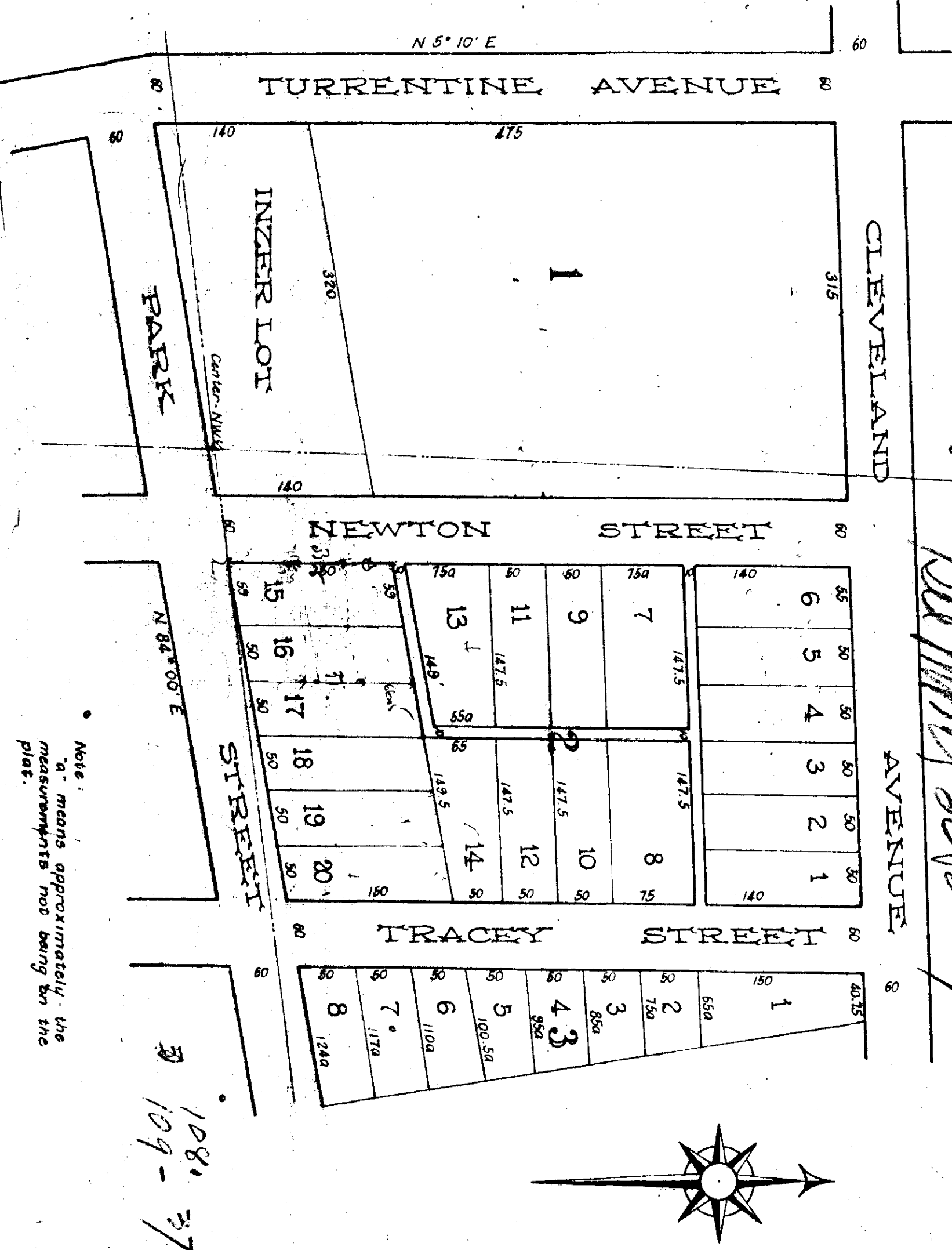


POLK ADDITION

PROPERTY OF MRS. MINNIE E. POLK - BEING A PART OF NW 1/4 OF SECTION 9 TP 12 R 6 E
SCALE: 1" = 100'

Deed Mrs. Polk 119



Note: "a." means approximately; the measurements not being on the plat.

State of Alabama, Etowah County
I, N. A. Hamman as owner in fee simple of Blocks 2 & 3 do hereby ratify and adopt this plat and Survey as made by the said Wilburn Hill, Surveyor. Witness our hands and seals on this 14th day of December, 1909.

N. A. Hamman

State of Alabama, Etowah County
I, J. W. Penn, Judge of Probate in and for said County and State hereby certify that N. A. Hamman, whose name is signed to the foregoing declaration, and who is known to me acknowledged before me on this day that being informed of the contents of the declaration they executed the same voluntarily on the day the same bears date.

J. W. Penn
Judge of Probate

State of Alabama, Etowah County
I, Wilburn Hill, C. E., hereby certify the above is a true and correct survey of Blocks 2 & 3 of the Polk Addition as surveyed and plotted by me. Witness my hand this 14 day of December, 1909.

Wilburn Hill
Civil Engineer

Filed in office for record the 17 day of January A. D. 1911 at 11 o'clock A. M. and duly recorded the 17 day of January, 1915.
L. L. Herzberg
Judge of Probate