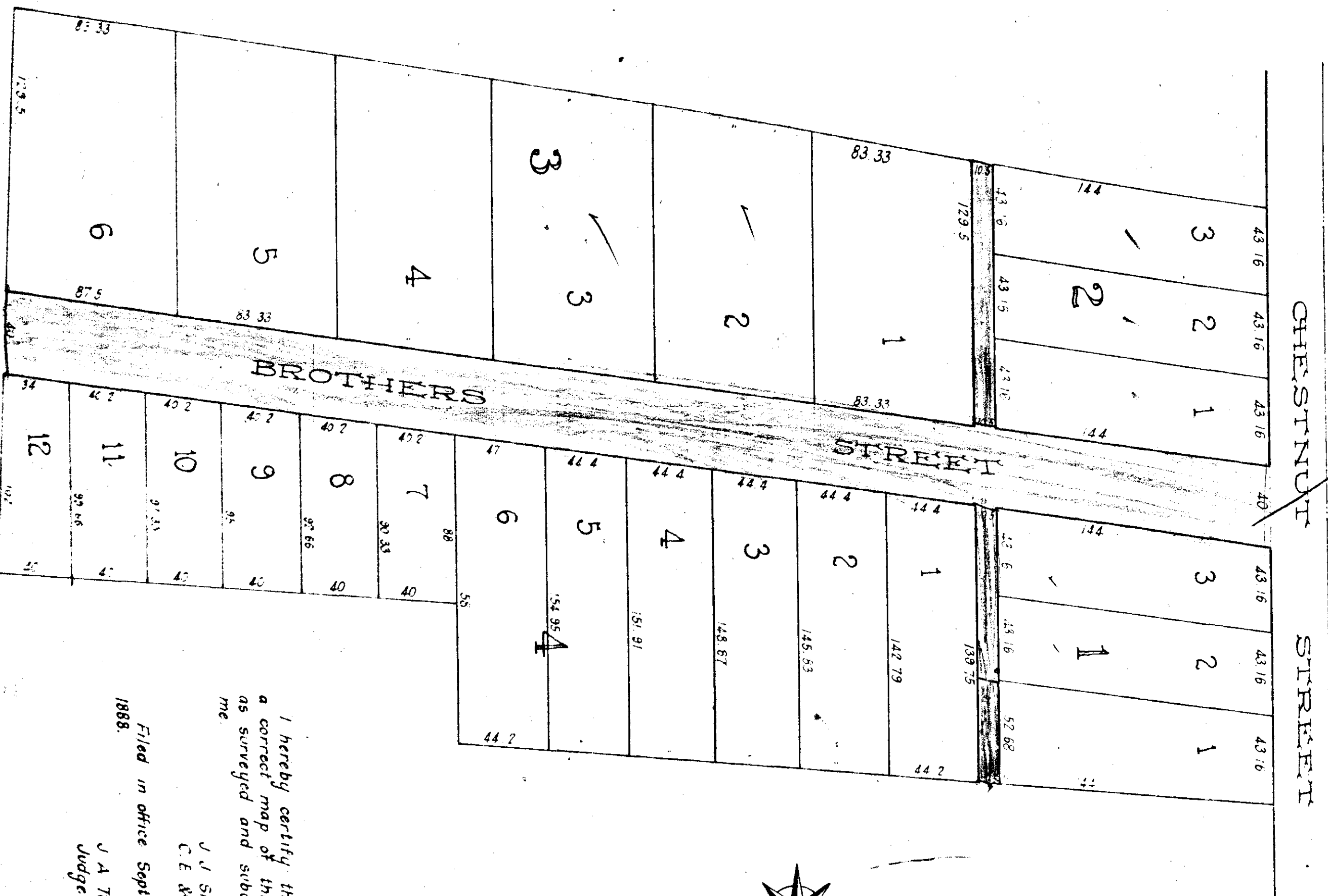


BROTHERS ESTATE

BEING IN SW 1/4 - SE 1/4 Sec 5 Tp 12 R 6.
SCALE: 1" = 50'

For Annual Report See Map & page 527

Land Line



I hereby certify that this is a correct map of this property as surveyed and subdivided by me

J. J. Singleton
C. E. & Surveyor

Filed in office September 17th.
1888.
J. A. Tallman
Judge of Probate