

TALLMAN ADDITION

GADSDEN, ALA.

SCALE: 1" = 100'

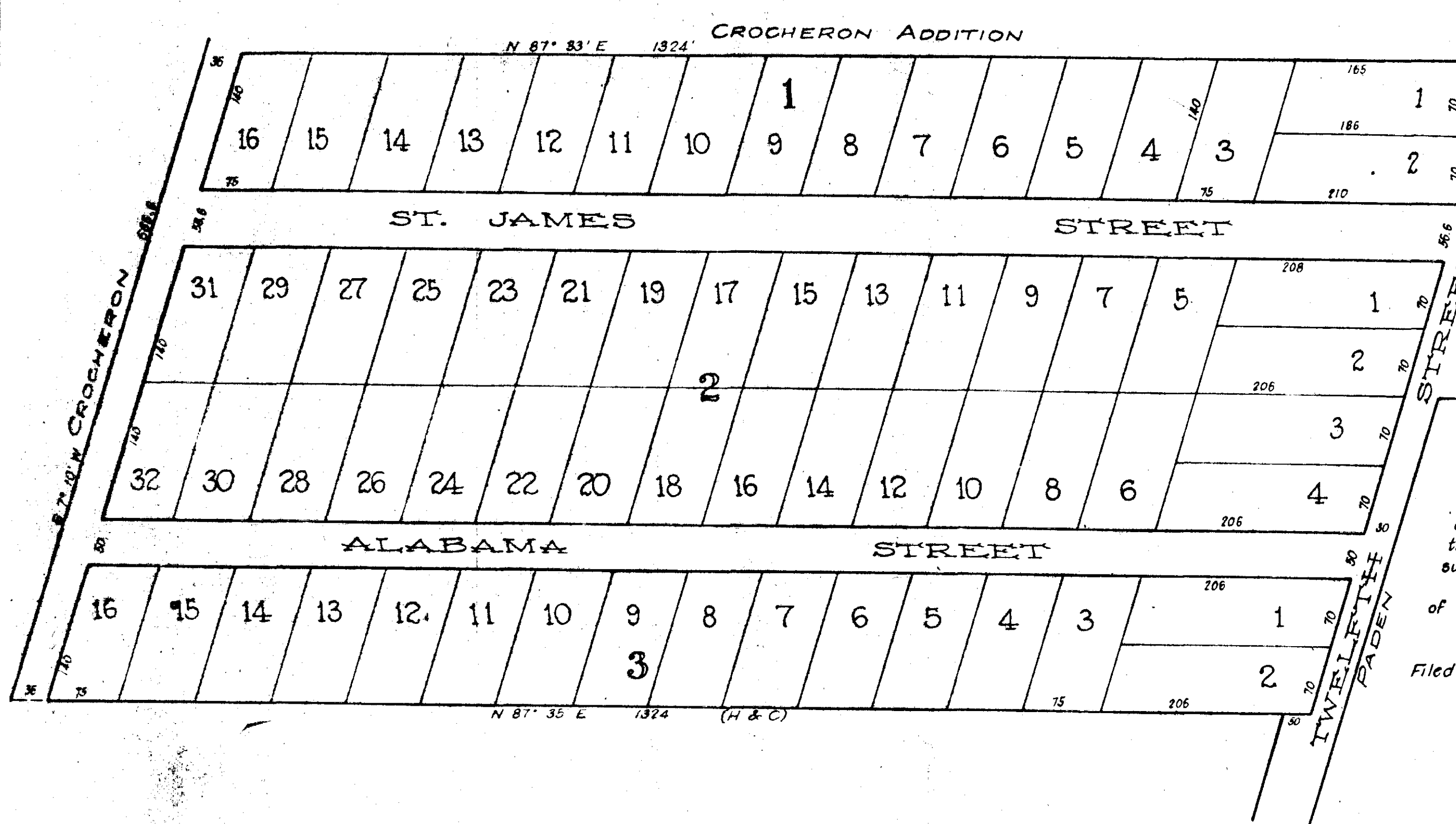
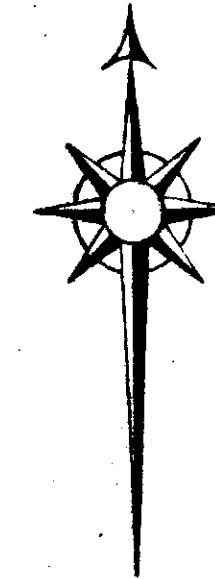


Exhibit "A":
A. G. Woodliff, W. J. Sibert,
J. P. McDuffie.
Exhibit "A" filed to statement
filed by commissioners in the
case of the application of Mrs.
A. P. Tallman for partition of
lands filed. This August 9th,
1888. - James Aiken
Special Probate
Judge

The State of Alabama
Etowah County
I hereby certify that the map or plat
of the lands described on this survey is a
true and correct map or plat of the lands
surveyed by me as the T. T. Tallman Estate
Given under my hand this the 20th day
of April, 1888.
T. M. Lister, C. E.
Filed in office this August 9, 1888.
James Aiken
Special Probate Judge

See 258