

STEWART'S ADDITION

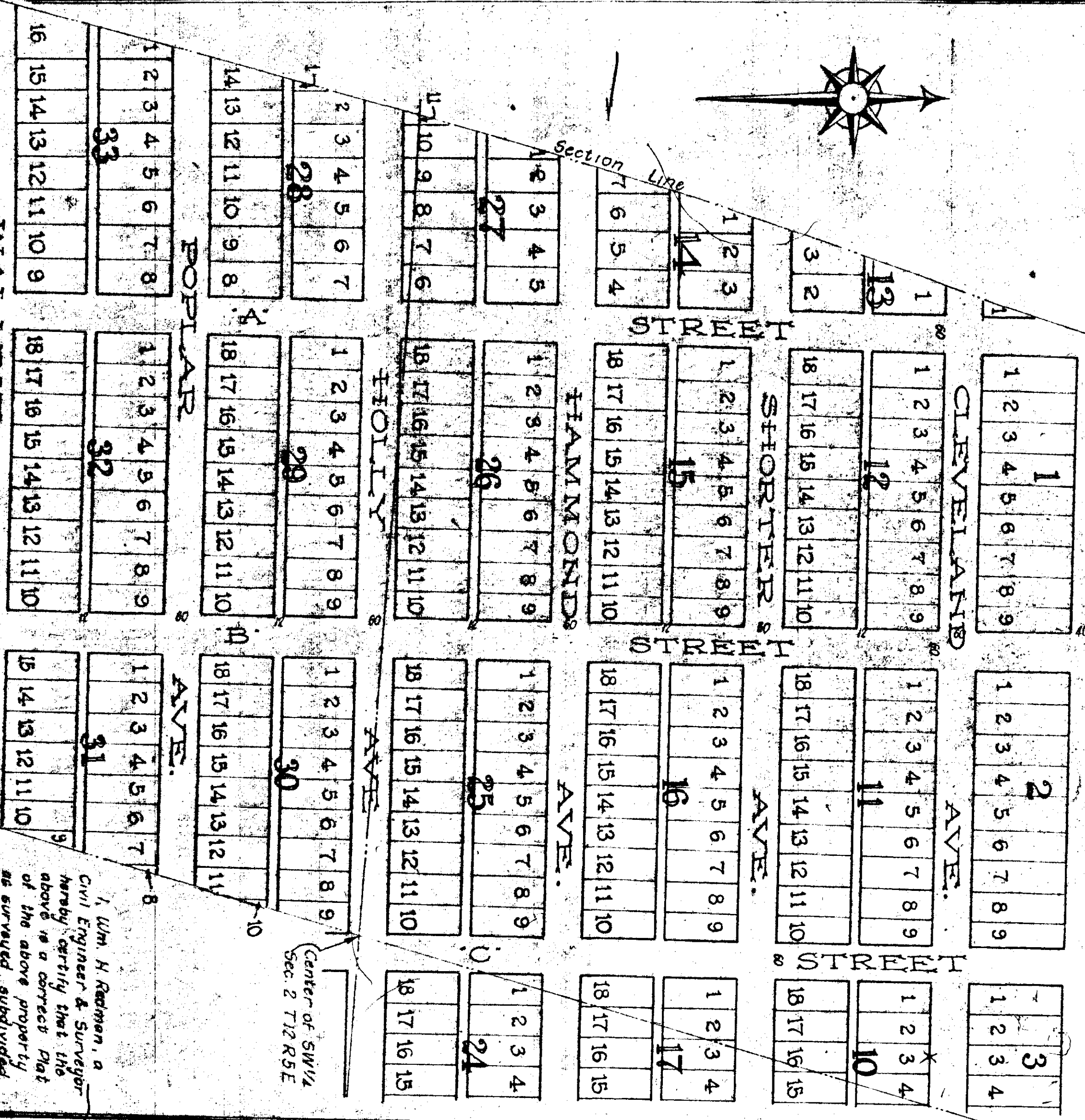
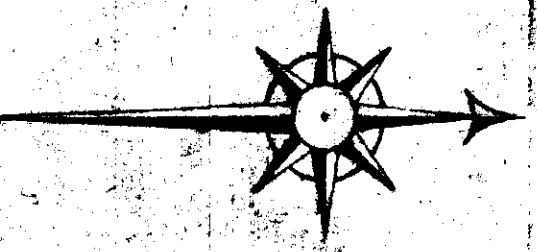
TO ATTALA, ALABAMA

SEE PAGE 77

See page 77

SCALE: 1" = 150'
 Whole Lots - 50' x 120'
 Except Bk's 1, 2, 3, 5, 6
 They are 50' x 160'
 Lots in Bk's 4 - 50' x 101'

Tempsco & Coosa Railroad
Anniston & Cincinnati Railroad



I, Wm. H. Rodman, a
 Civil Engineer & Surveyor
 hereby certify that the
 above is a correct plat
 of the above property
 as surveyed, subdivided
 and platted by me this
 25th day of May A.D.
 1898.
 Wm. H. Rodman
 C.E. & Surveyor