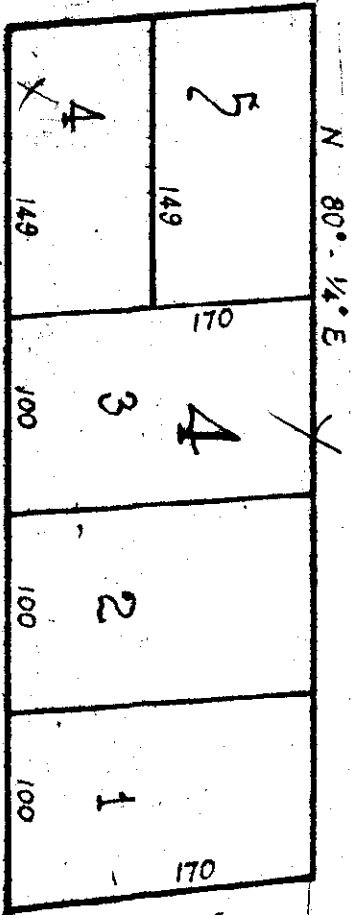
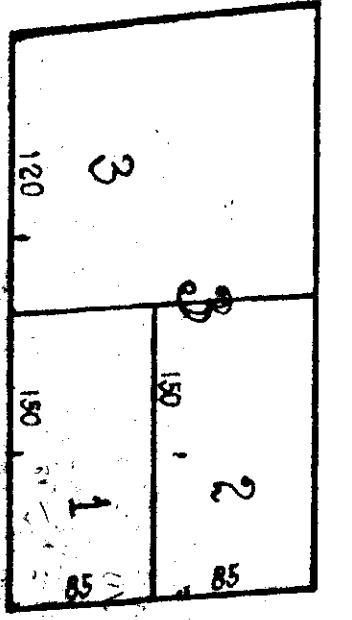
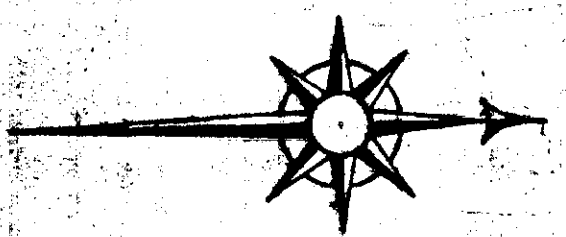
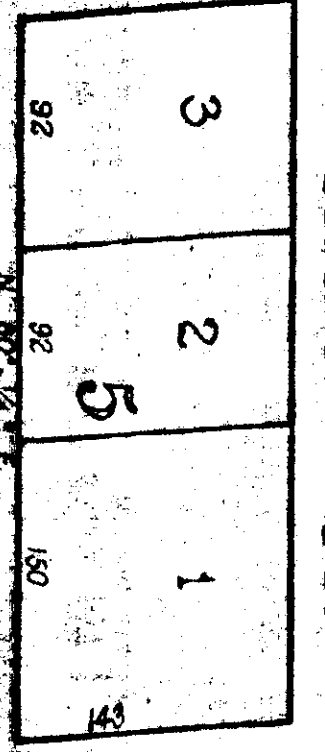
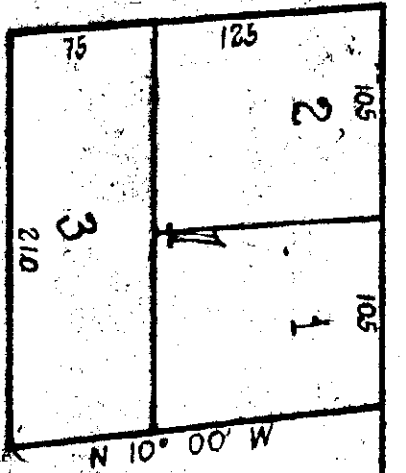
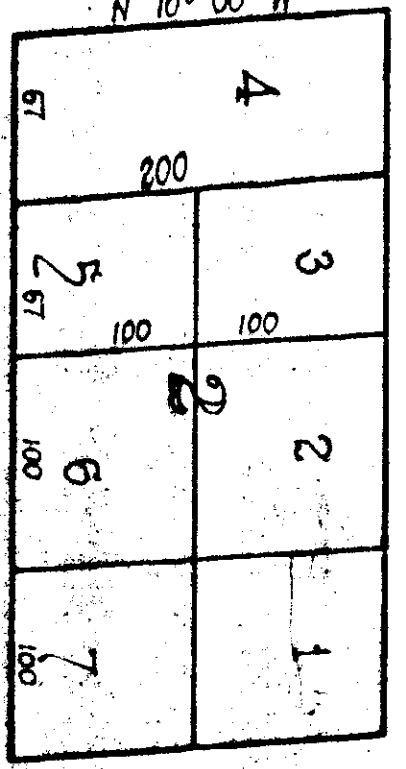


# HARRIS ADDITION



100  
100  
100  
170



I, W. N. Cowan, Surveyor, hereby certify that the above plat is a correct map of the land and surveyed by me, it being a part of the SW 1/4 of the NW 1/4 and a part of the N 1/2 of the SW 1/4 of Section 9 T. P. 12 S. R. 6 E. This March 23, 1887.

W. N. Cowan, Surveyor

We, A. Harris, J. E. Whaley, J. R. Hughes, and W. P. Johnson, as the owners in fee of the above property, hereby ratify and adopt the above plat of survey made by the said W. N. Cowan, Surveyor. Witness our hands and seals this 23rd day of March, 1887.

A. Harris  
J. R. Hughes  
J. E. Whaley  
W. P. Johnson

State of Alabama, Blount County  
I hereby certify that the above plat and declaration was filed in my office for record on the 23rd day of March, 1887.  
L. C. Hamlin,  
Judge of Probate